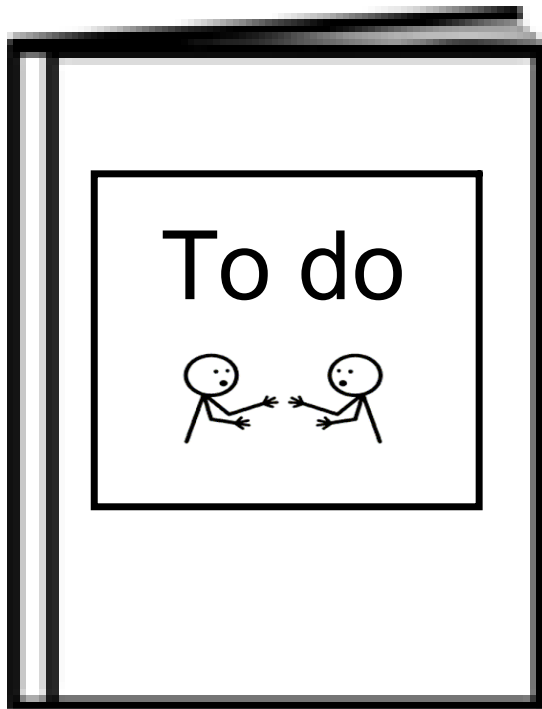


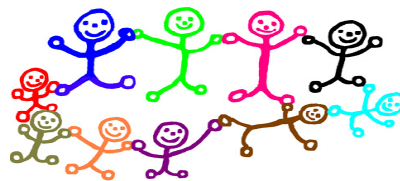


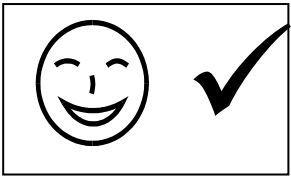

The Communication Plan 2012 to 2013


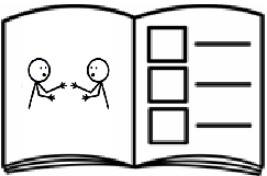
Making Communication Better
For People with Learning Disabilities






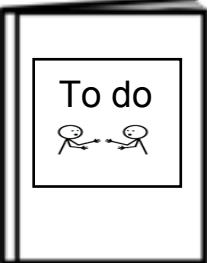
What work will we be doing this
year?
2012 to 2013



	Aim What we want to do	Outcome How we know we have done it	Lead
	<p>Make sure the Introduction to Communication Training is done and is good</p>	<p>Introduction to communication training will be delivered. People will say the communication training is good and helpful. The trainers will get the support they need. Updates are given to the steering group. Think about the best way forward for this training. Review training for carers.</p>	<p>Jane Hemsley City Marion Bruce County Pauline Ndigirwa Health</p>
	<p>Help everyone to sign</p>	<p>Awareness training will be delivered as needed. Foundation Courses will be delivered, 2 City and 2 County. People say the training is good and helpful. We will have one new tutor. All tutors will get the support they need. Training will be given around individuals. DVD of core vocabulary will be available. The group will earn money to cover the costs of training. Updates are given to the steering</p>	<p>Leah Brown Maureen Richardson Marion Bruce</p>

		group	
	<p>Support people to make written information easier to understand</p>	<p>The core group will meet and include a person with learning disabilities. Mentors will get the support that they need. Easy Write training will be delivered Training for specialist learning disability services will be designed. Opportunities for e learning are discussed. To make resources available to more people Extend the Easy Word dictionary Keep websites up to date Publicise the service Updates are given to the steering group Audit to see if people are carrying on after being mentored. Training will be reviewed.</p>	<p>Pauline Ndigirwa</p>
	<p>Support people to do good communication passports</p>	<p>Communication Passport training is delivered. Look at how we can follow up the carers workshops. See if PCP training is going ahead. People say that the training was good and helpful. Resources are available to people.</p>	<p>Sue Lyons</p>

		The resources are on the website. Updates are given to the steering group	
	Continue the project to involve people with profound and multiple learning disabilities	The guidelines are shared with people. There is a DVD produced. There is a launch of the guidelines. Guidelines are part of the complex physical needs pathway. A network is set up to support people working with this group of people. Resources are made available to people. Services start to use the guidelines	Maureen Richardson
	Tell people about the plan and keep the websites up to date	The websites will be up to date All services will know about the plan More people with learning disabilities and their carers will know about the plan Check who the links are for the websites	Check County Kavita Dholakia City - check Pauline Ndigirwa Leicestershire Partnership trust
	Speaking Up for Health	The group covers all areas of health and develops a consultation role. People are involved in checking services	Sue Lyons

		<p>Make people more aware of the work we are doing. More work on checking services.</p>	<p>Jane Parr</p>
	<p>Run the communication steering group and check that the plan is happening. Develop and share skills across the communication steering group</p>	<p>The meetings have happened and the plan has been done Feeding into the Partnership Board.</p>	<p>Jane Parr</p>