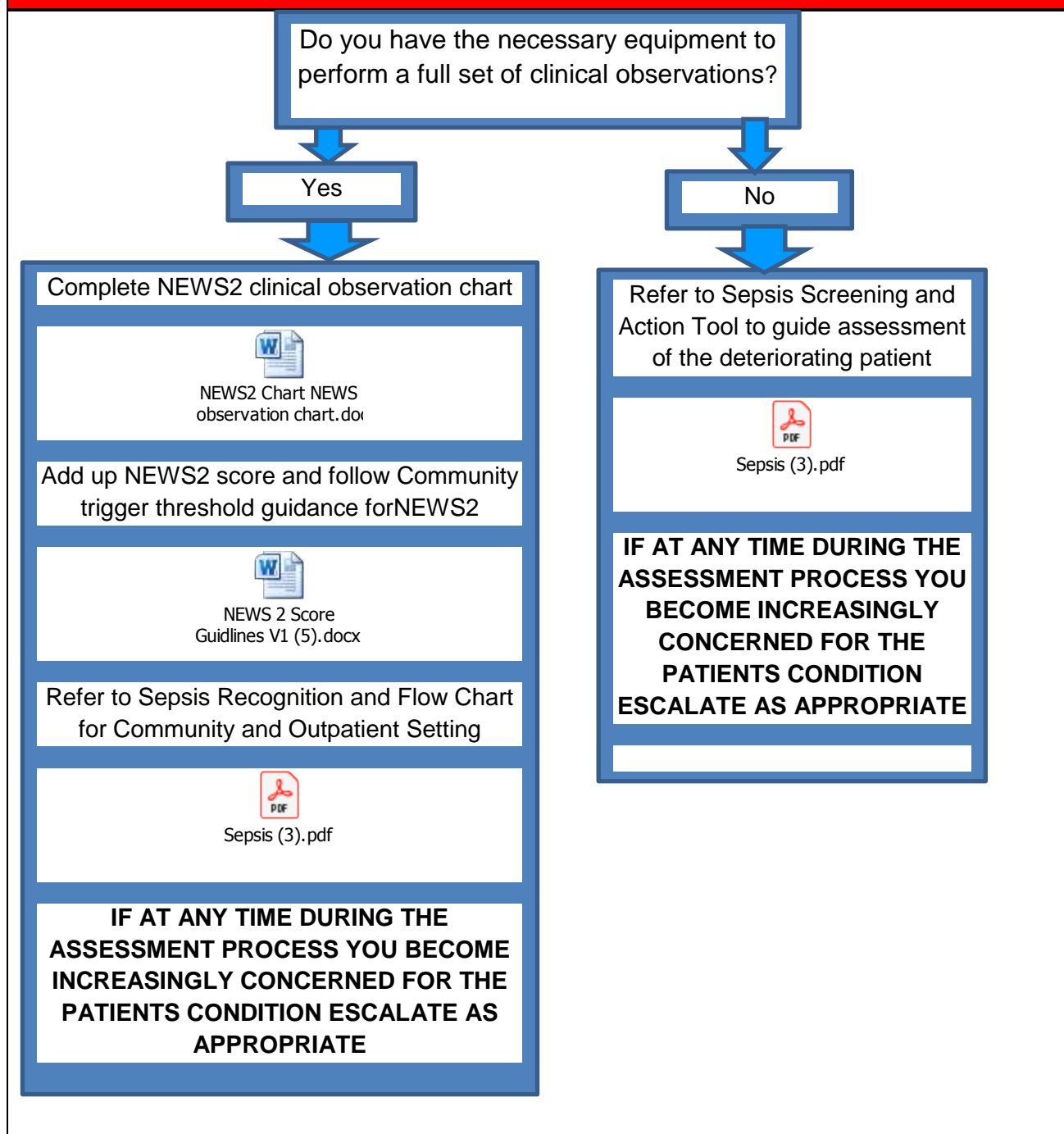


## ACTION CARD:

### Guidelines for Assessing and Escalating the care of a Deteriorating Patient in Community Nursing and Therapy Teams

(This is in support of the NICE guidance on managing suspected or confirmed pneumonia in adults in the community and also deterioration where sepsis or COVID-19 should be considered)

Version 2: 15/04/2020



**The essential equipment required to complete a full set of NEWS2 observations is:**

**Registered Nurse /Therapist**

- Thermometer
- Blood pressure machine (and stethoscope if manual blood pressure machine)
- Pulse oximeter

**Non registered nurse/therapist /support worker**

- Thermometer
- Digital blood pressure machine
- Pulse oximeter