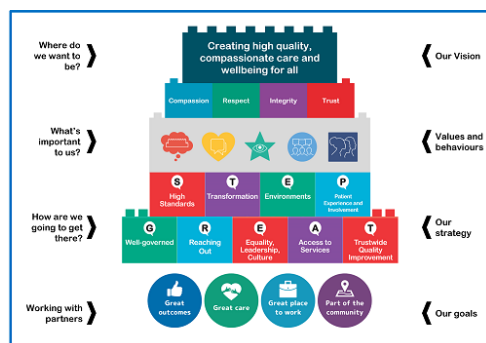


Trust Board – 25th January 2022 – Chair’s report

Purpose of the report

Chairs report for information and accountability, summarising activities and key events
 From 21st December 2021 to 25th January 2022



Leicestershire and Rutland's
 Community and Mental Health Charity

<u>Hearing the patient and staff voice</u>	<ul style="list-style-type: none"> The Chair and Non-Execs Boardwalks are currently postponed to minimise the risk of community transmission of the covid-19 virus onto our wards.
<u>Promoting Equality Leadership & Culture</u>	<ul style="list-style-type: none"> Together Against Racism : Joined the BAME network refecation event to follow up on the John Ameci masterclass As the Health & Wellbeing Guardian (HWBG), I continue to promote Wellbeing Wednesdays with my weekly blog and have connected with the Midlands Region HWBG network. We continue to prioritise staff wellbeing in LPT.
<u>Building strong Stakeholder relationships</u>	<ul style="list-style-type: none"> Focus on Covid19, vaccination delivery and waiting times recovery through NHS England & Improvement (NHSEI) Regional Director calls with Midlands and LLR Chairs Attended LLR Integrated Care Board (ICB)meeting to focus on current operational priorities for the ICS Part of the interview panel for the ICB Non-Executive appointments into 4 new roles for Audit, Quality, Health Inequalities and People. Chaired the monthly LLR ICS Finance Committee meetings focusing on future revenue spend, capital programme and key risks. 1:1 stakeholder meetings with John MacDonald Chair of UHL, David Sissling Chair of LLR ICS, Mark Farmer Chair of LPT's Peoples Council
<u>Good Governance</u>	<ul style="list-style-type: none"> Chaired the interview panel for a Consultant Psychiatrist in CAMHS
<u>Non-Executive Directors (NED)</u>	<ul style="list-style-type: none"> New guidance on NED champion roles was published by NHSEI in December 2021. This is being reviewed and implemented through our governance structure. The proposed roles will be formally recommended to the Board for approval in March 2022.

Governance table

For Board and Board Committees:	Trust Board 25.1.22	
Paper sponsored by:	Cathy Ellis	
Paper authored by:	Cathy Ellis	
Date submitted:	18 January 2022	
State which Board Committee or other forum within the Trust's governance structure, if any, have previously considered the report/this issue and the date of the relevant meeting(s):	N/A	
If considered elsewhere, state the level of assurance gained by the Board Committee or other forum i.e. assured/ partially assured / not assured:	N/A	
State whether this is a 'one off' report or, if not, when an update report will be provided for the purposes of corporate Agenda planning	Reported every public board meeting	
STEP up to GREAT strategic alignment*:	High Standards	X
	Transformation	X
	Environments	
	Patient Involvement	X
	Well Governed	X
	Reaching out	X
	Equality, Leadership, Culture	X
	Access to Services	
	Trust Wide Quality Improvement	X
Organisational Risk Register considerations:	List risk number and title of risk	N/A
Is the decision required consistent with LPT's risk appetite:	N/A	
False and misleading information (FOMI) considerations:	None	
Positive confirmation that the content does not risk the safety of patients or the public	Yes	
Equality considerations:	Yes reflects the role of our staff networks and personal commitment to inclusion	