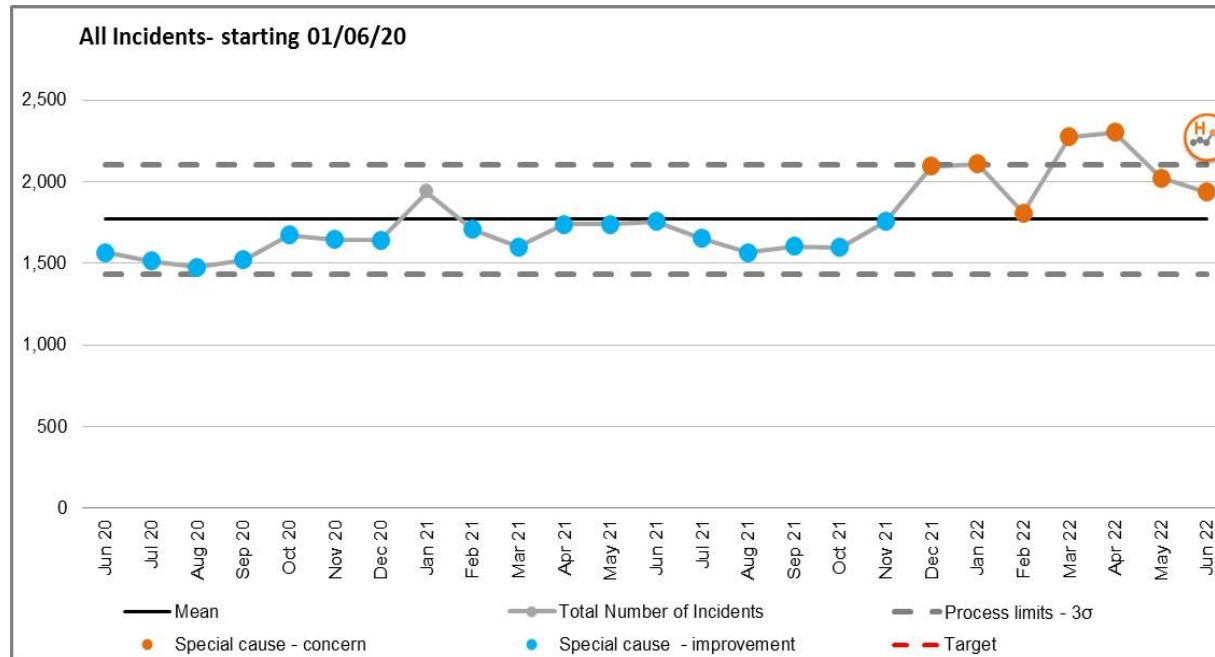


# Appendix 1

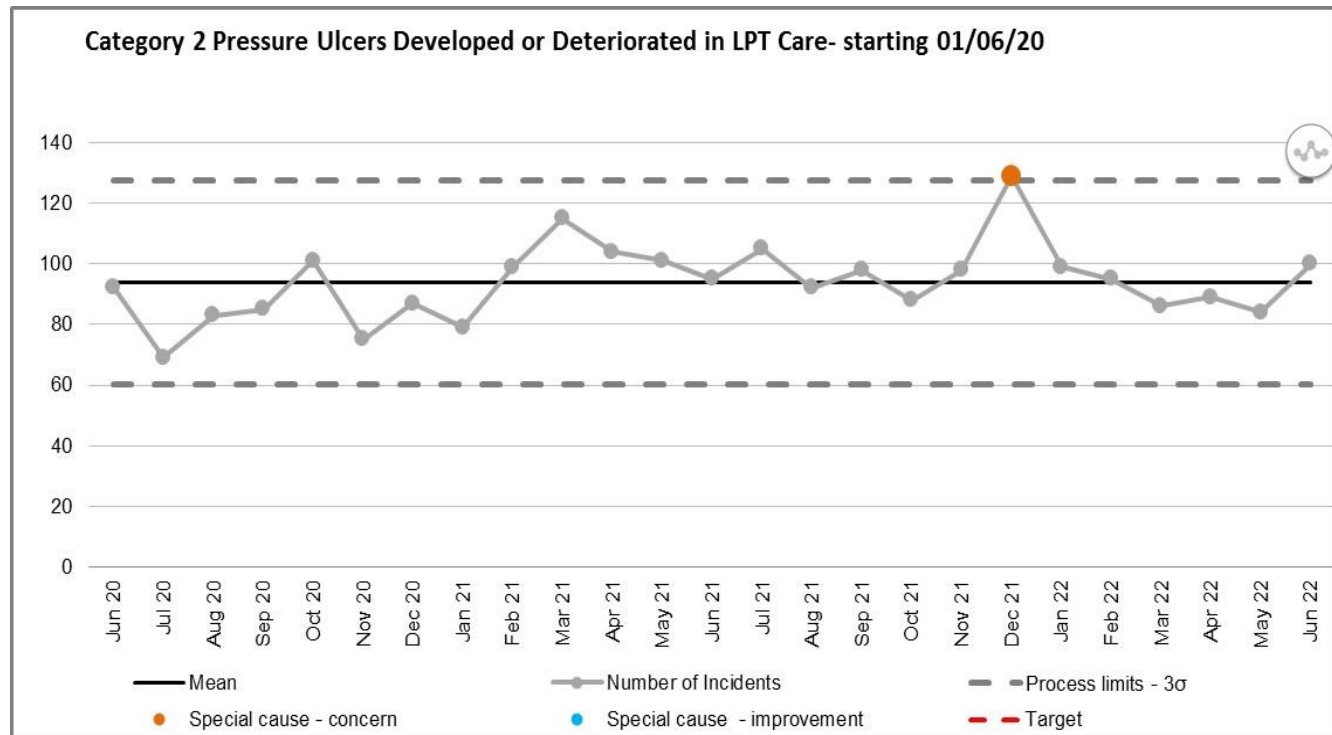
The following slides show Statistical Process Charts of incidents that have been reported by our staff during May & June 2022

Any detail that requires further clarity please contact the Corporate Patient Safety Team

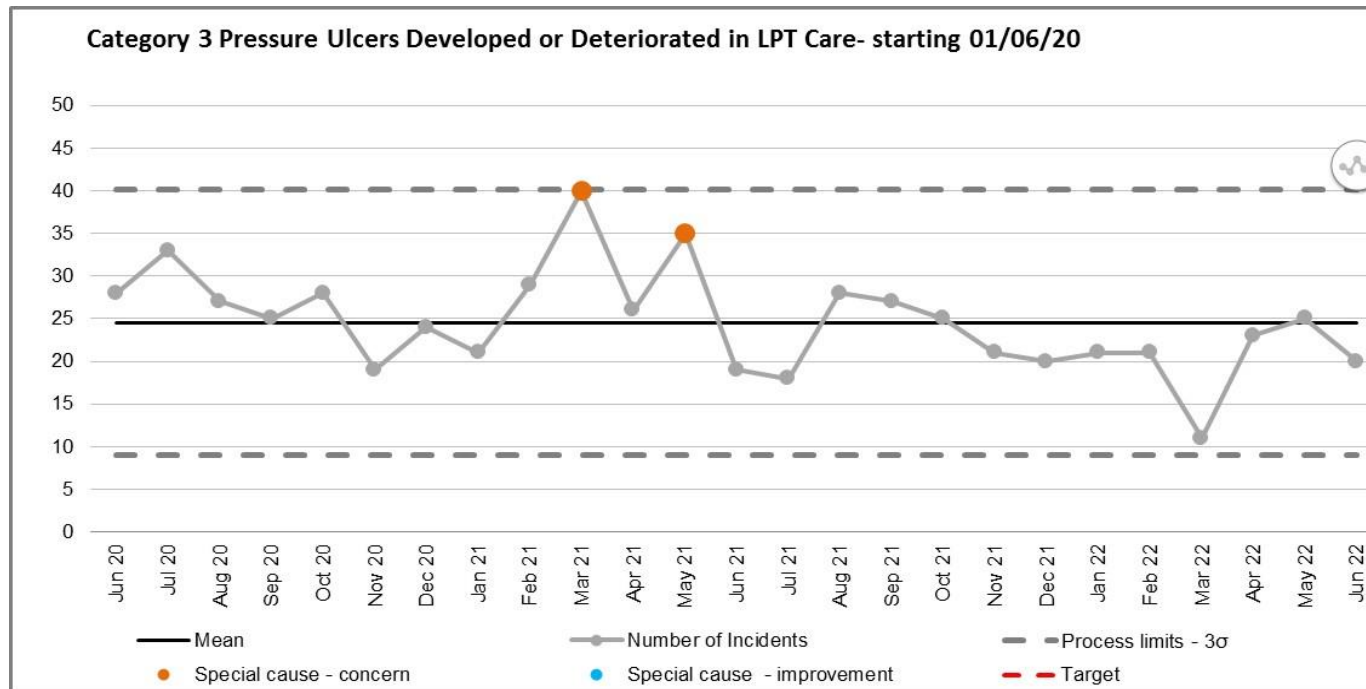
# 1. All incidents



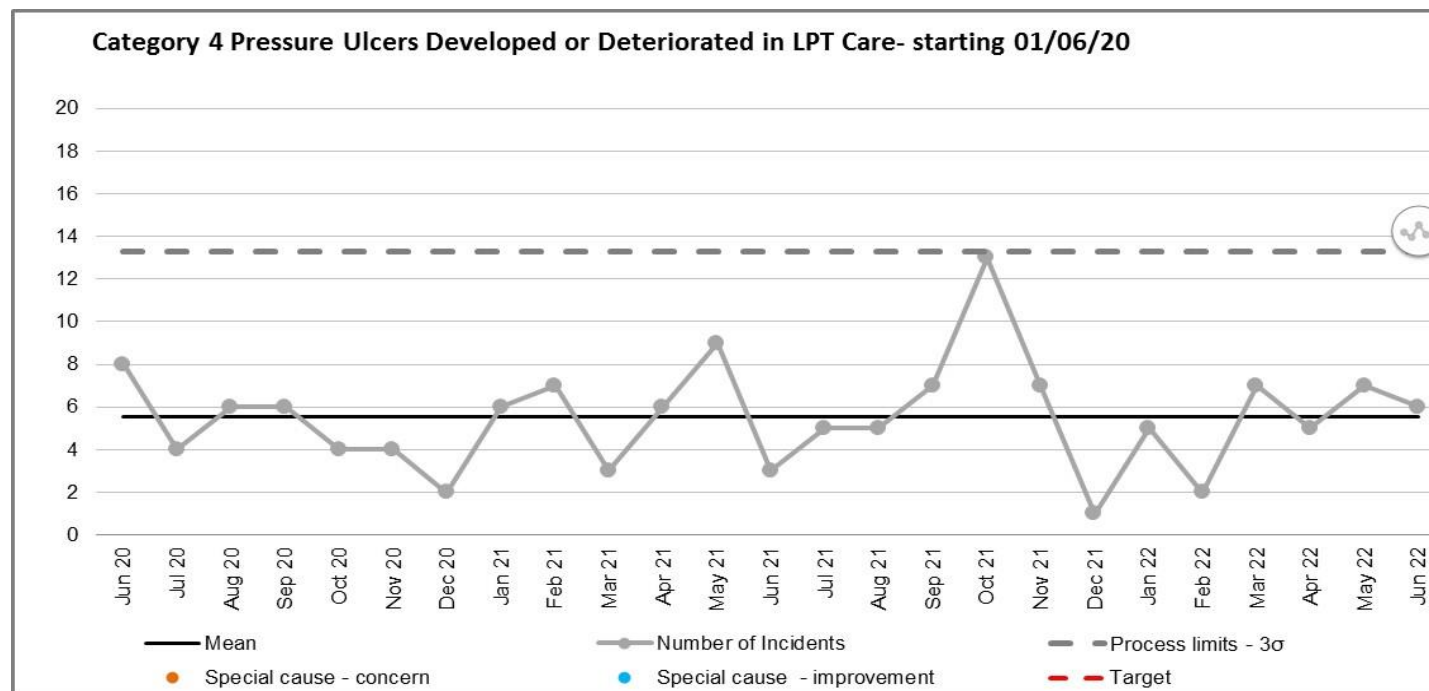
## 2. Category 2 Pressure Ulcers developed or deteriorated in LPT Care



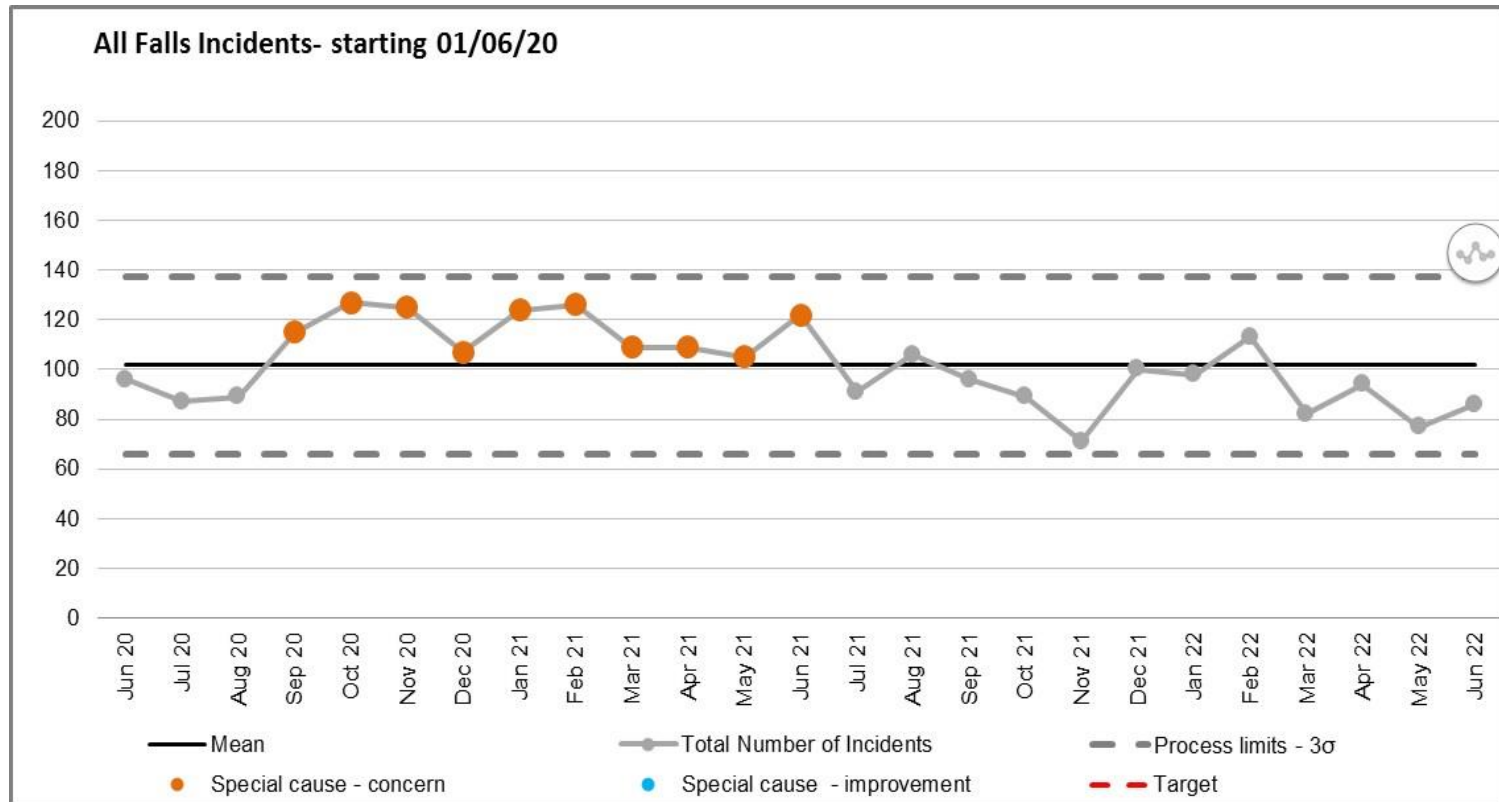
### 3. Category 3 Pressure Ulcers developed or deteriorated in LPT Care



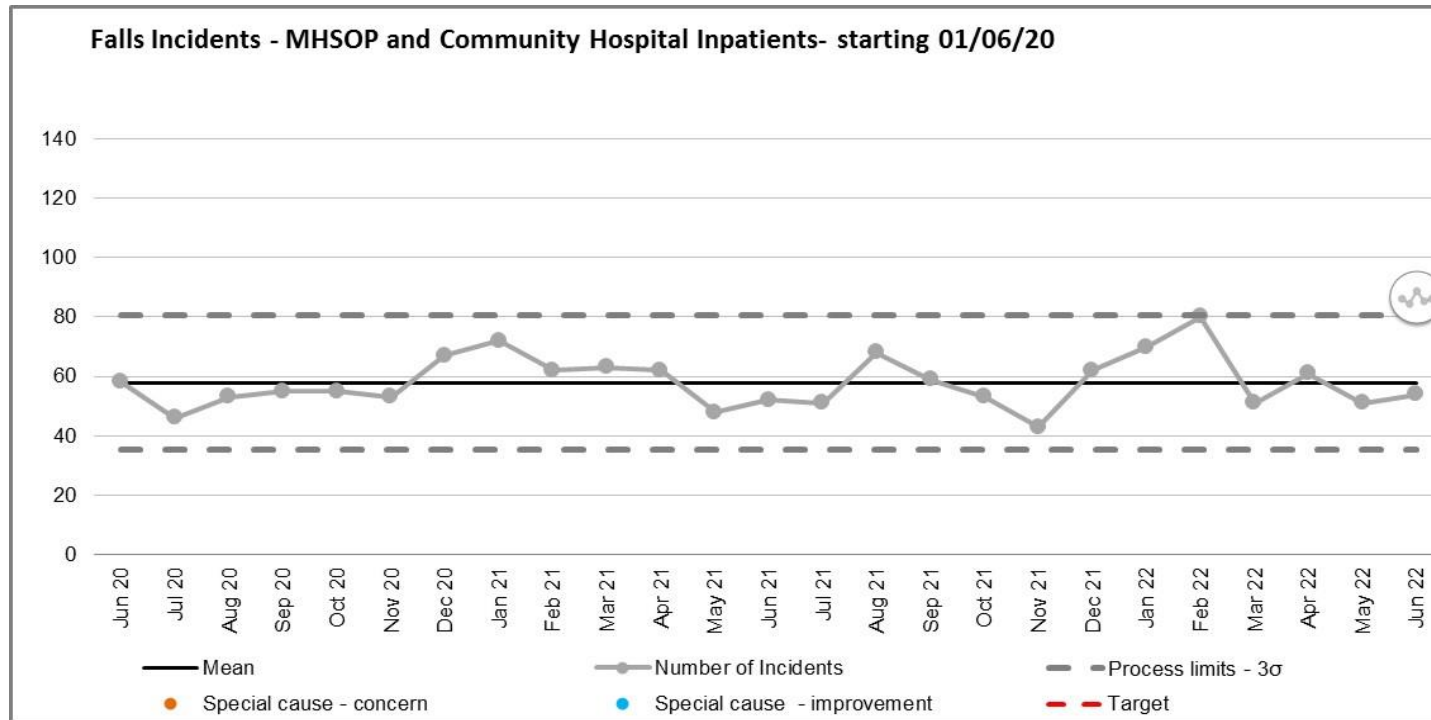
## 4. Category 4 Pressure Ulcers Developed or deteriorated in LPT Care



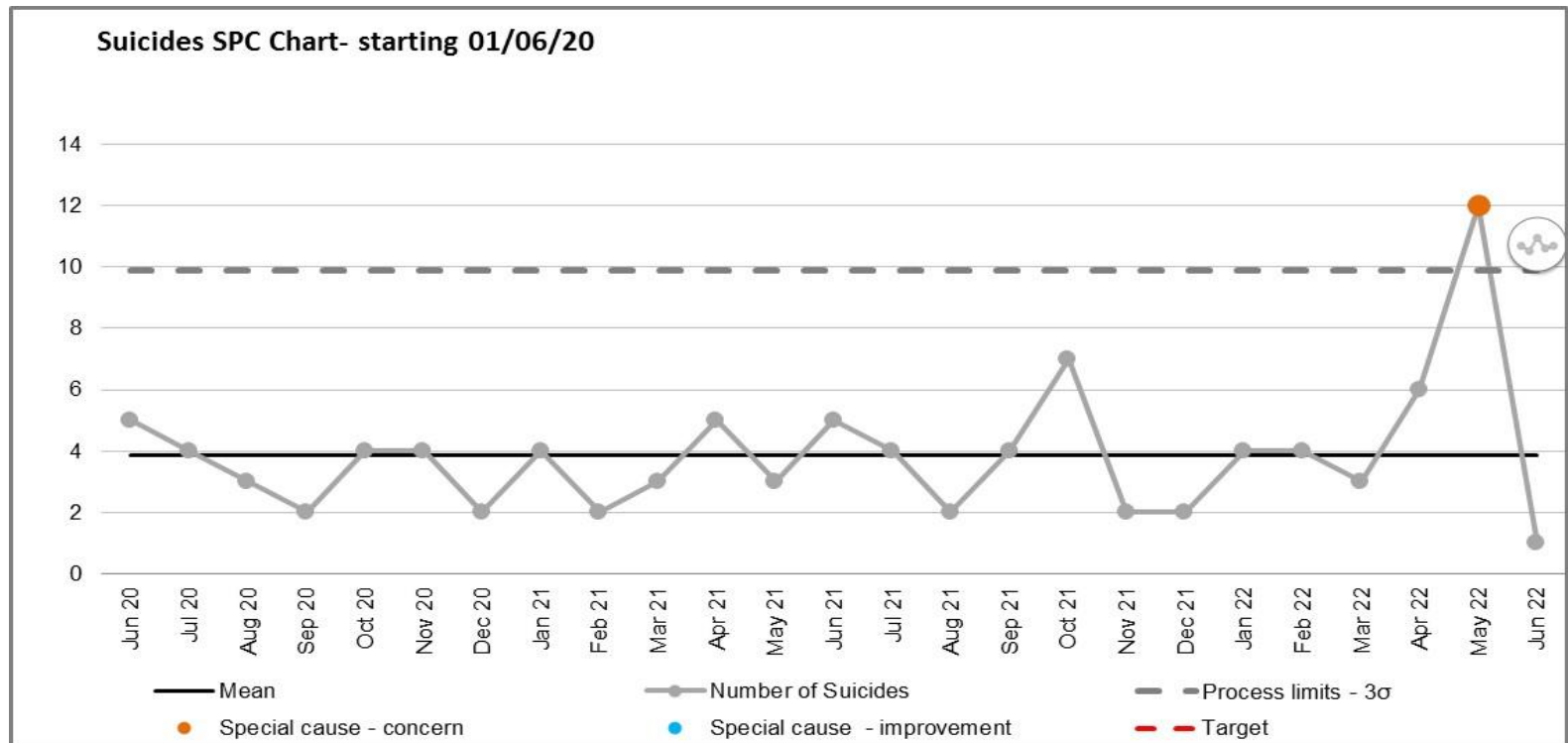
## 5. All falls incidents reported



## 6. Falls incidents reported – MHSOP and Community Inpatients

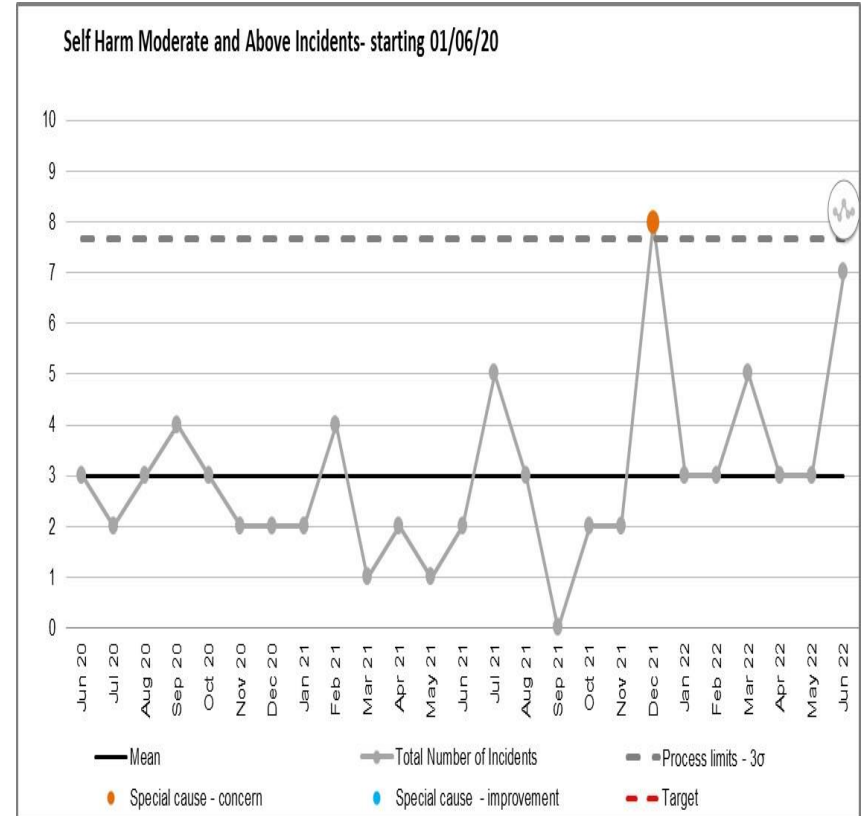
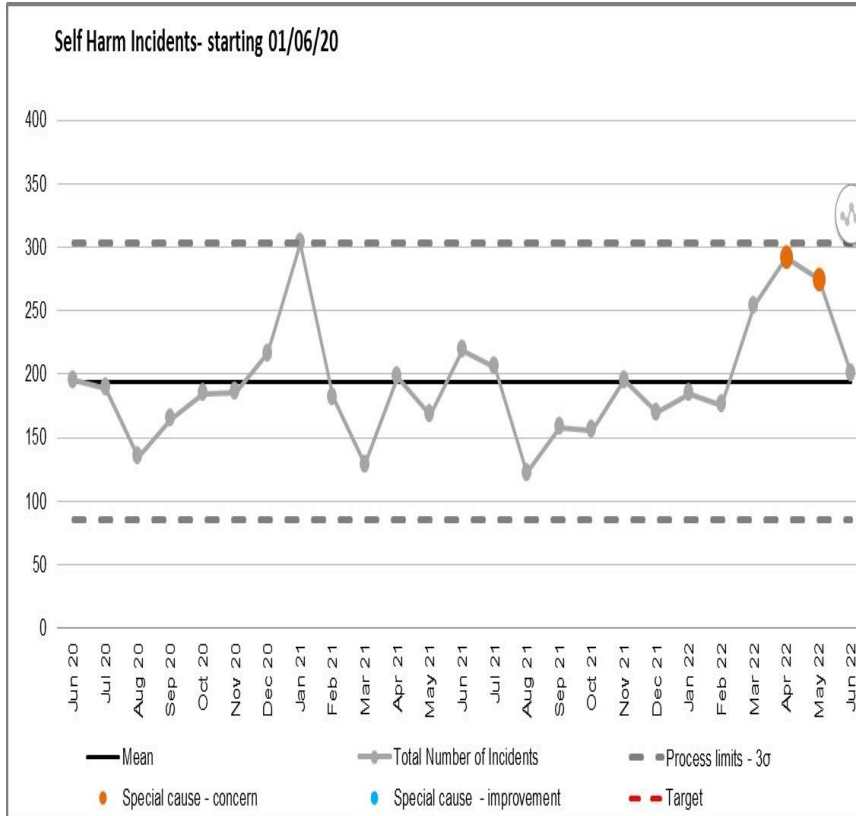


## 7. All reported Suicides

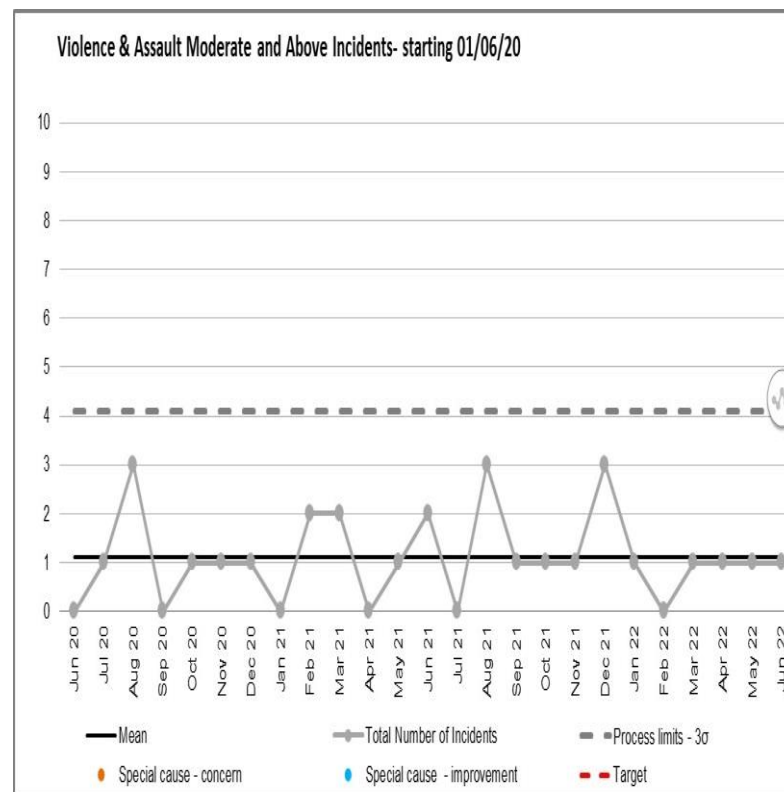
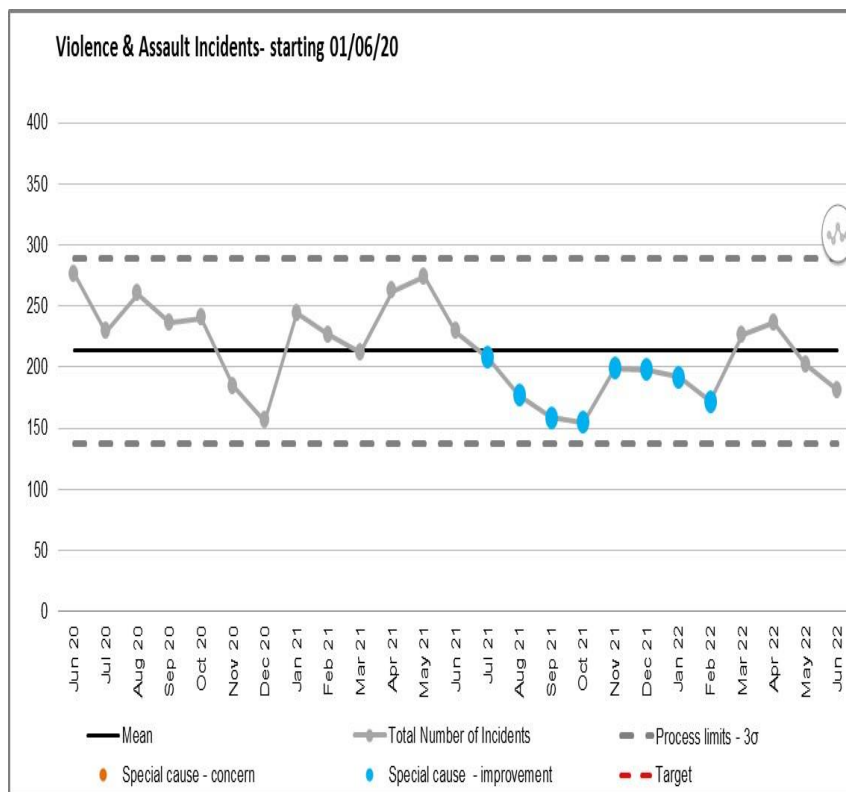




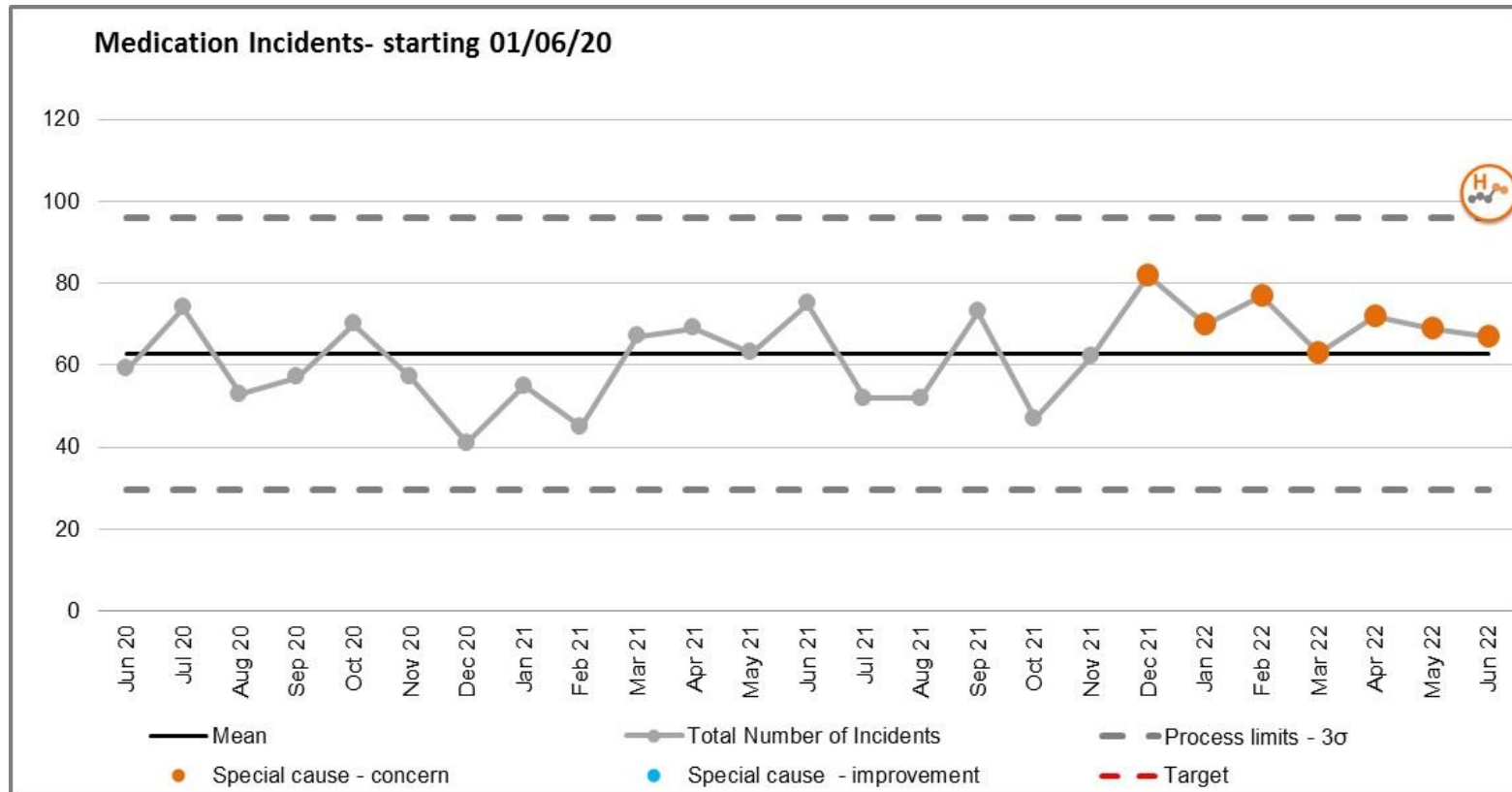
## 8. Self Harm reported Incidents



# 9. All Violence & Assaults reported Incidents



# 10. All Medication Incidents reported

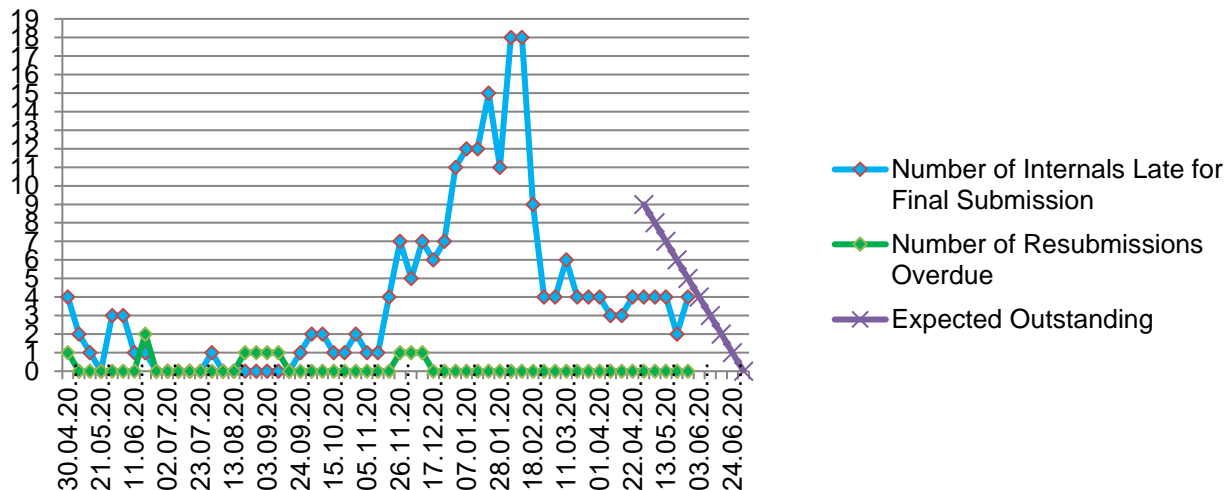


## 12. Ongoing - StEIS Notifications for Serious Incidents

2022/2023 - STEIS Notifications and Internal Investigations									
		StEIS Notifications	SI INVESTIGATIONS				Internal Investigations		
		Downgrade & removal requests	SIs declared DMH	SIs declared FYPC/LD	SIs declared CHS	Signed off in month	DMH	FYPC/LD	CHS
2022/23 Q1	April	0	2	0	2	10	3	3	3
	May	0	3	0	0	12	5	0	4
	June	0	4	1	2	7	2	1	3
2022/23 Q2	July								
	August								
	September								
2022/23 Q3	October								
	November								
	December								
2022/23 Q4	January								
	February								
	March								
YTD			9	1	4	29	10	4	10

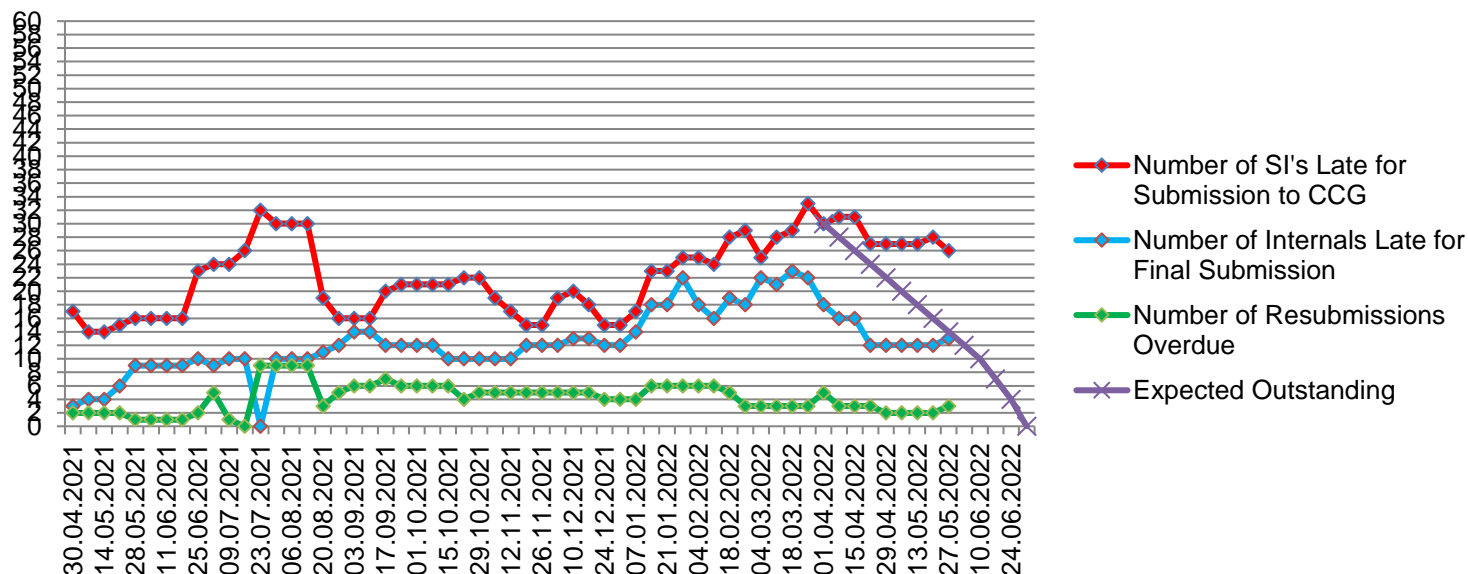
# 12a. Overdue Serious Incidents/Internal Investigation & CCG resubmissions(includes totals) - CHS

**Overdue CHS SI's/Internal Investigations as at 31.05.2022**



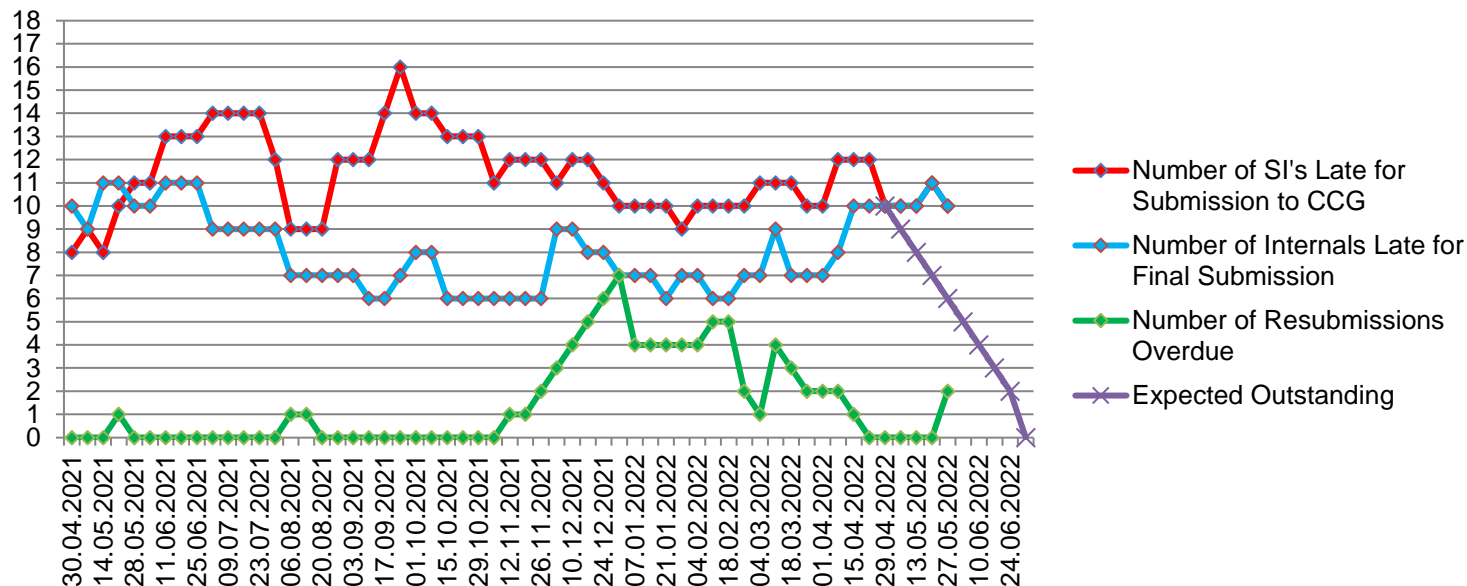
## 12a. Overdue Serious Incidents/Internal Investigation & CCG resubmissions (includes totals) - DMH

Overdue DMH SI's/Internal Investigations as at  
31.05.2022

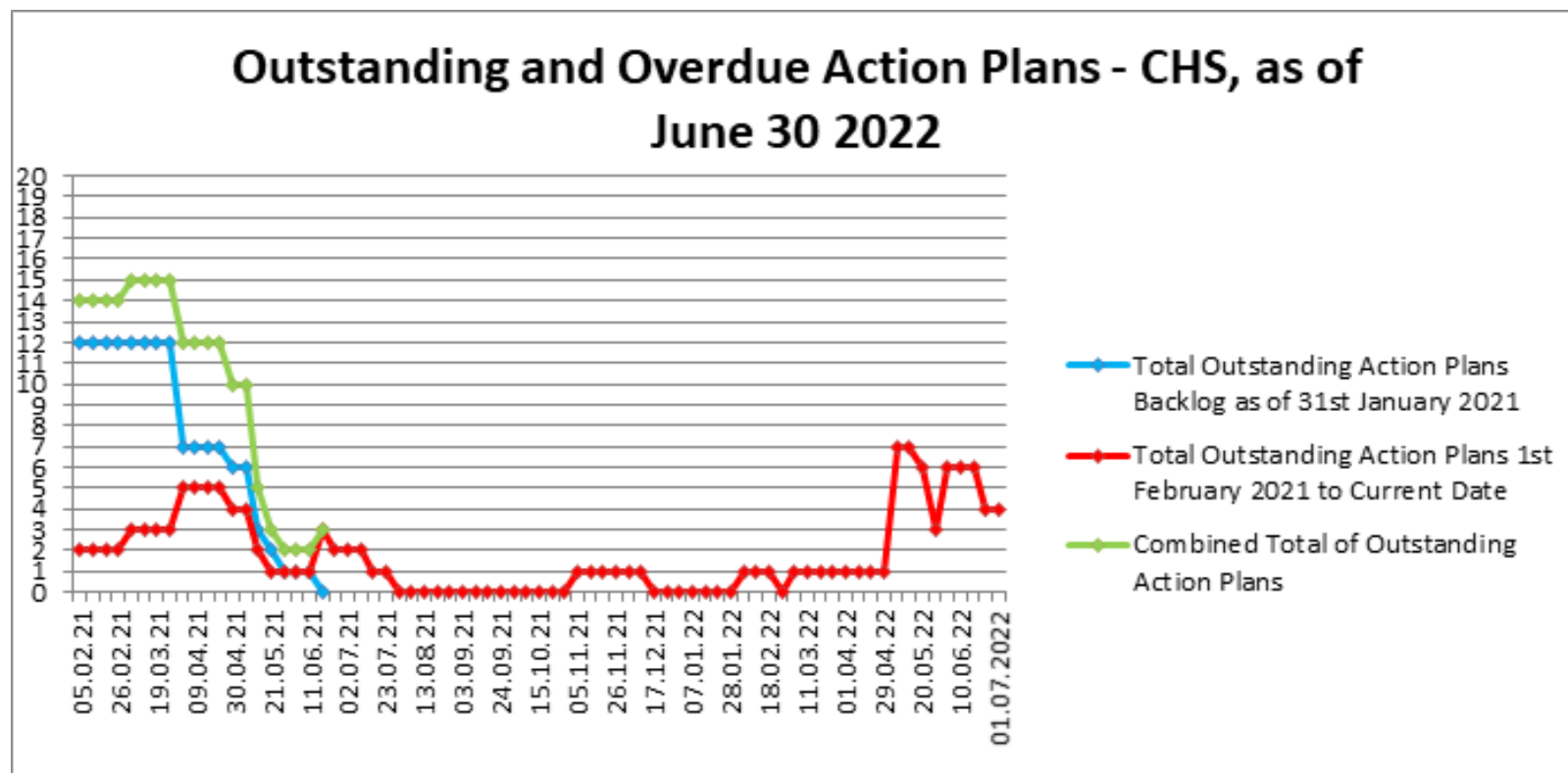


## 12a. Overdue Serious Incidents/Internal Investigations & CCG resubmissions (includes totals) - FYPCLD

Overdue FYPC/LD SI's/Internal Investigations as at  
31.05.2022



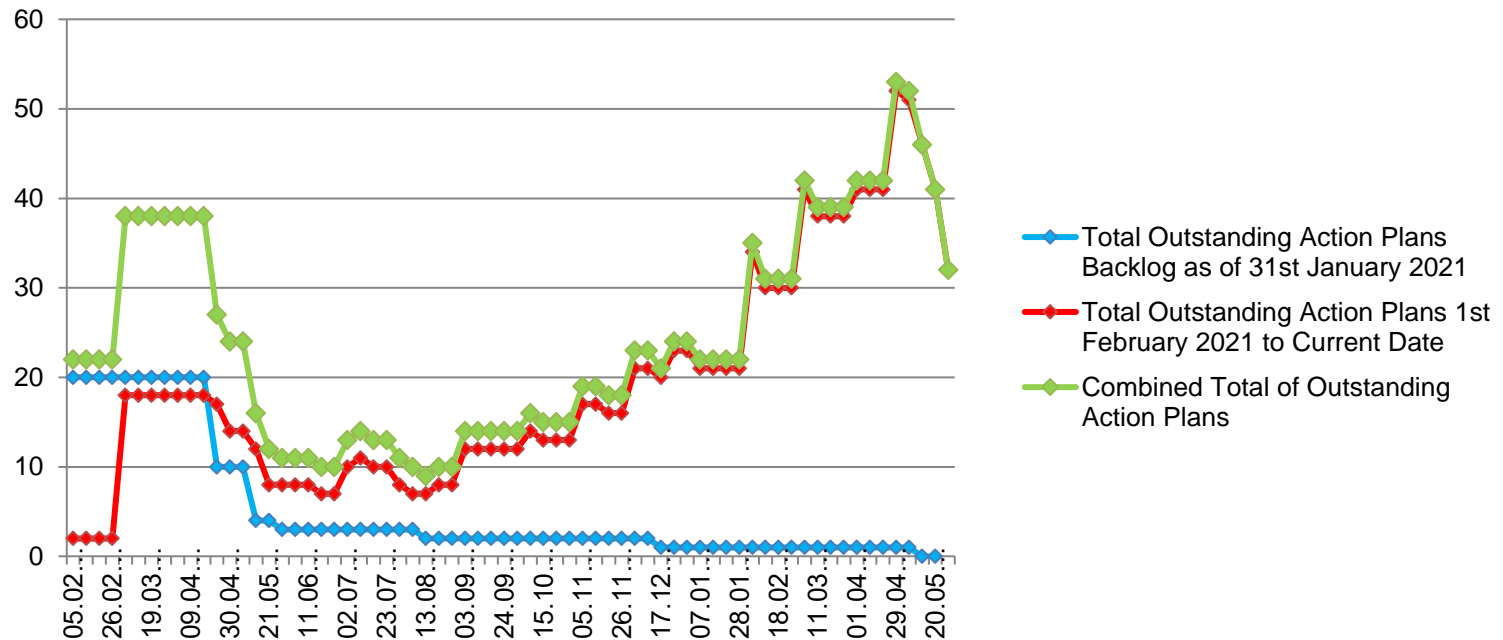
## 12.b Directorate SI Action Plan Compliance Status 2020/21 to date





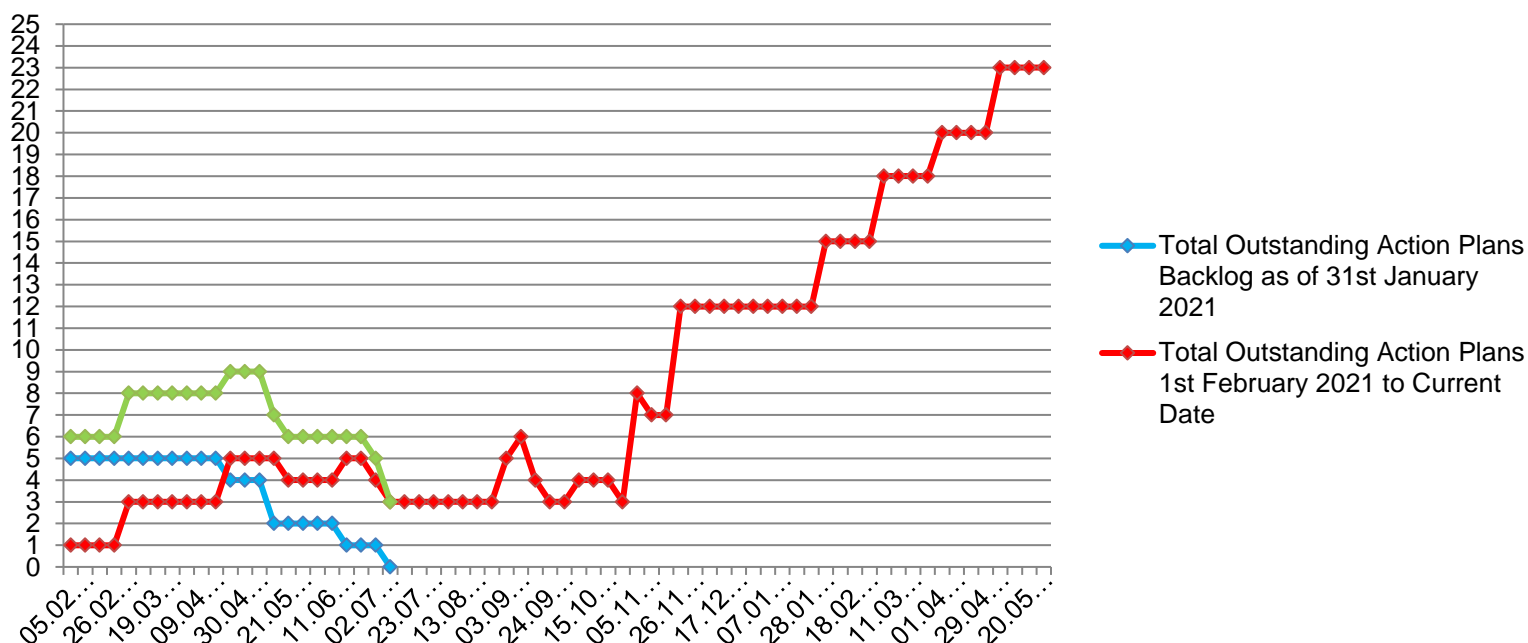
# 12.b Directorate SI Action Plan Compliance Status 2020/21 to date - DMH

## Outstanding and Overdue Action Plans - DMH, as of May 27th 2022



## 12b. Directorate SI Action Plan Compliance Status 2020/21 to date - FYPC-LD

### Outstanding and Overdue Action Plans - FYPC/LD, as of May 27th 2022



# 12. Learning

## Serious & Internal Incidents Emerging & Recurring Themes

- Lack of communication or joined up approach between teams or sharing of information with other agencies. **Action:** FYPC/LD and DMH have a project group planned to agree how to make the sharing of information easy
- Mental Capacity Assessments & overall care plans and risk assessments not considered or completed – this remains a theme across all adult areas. **Action:** Planned Safeguarding Level 3 for roll out that will address the importance of using MCA's and increasing staff confidence.
- Management of fluid balance and recognising/ escalating dehydration. **Action:** Task and finish group to improve staff knowledge & tools to manage this in the clinical areas
- Management of the deteriorating patient **Action:** embedding the use of NEWS2 escalation and expansion of CHS readmission audit