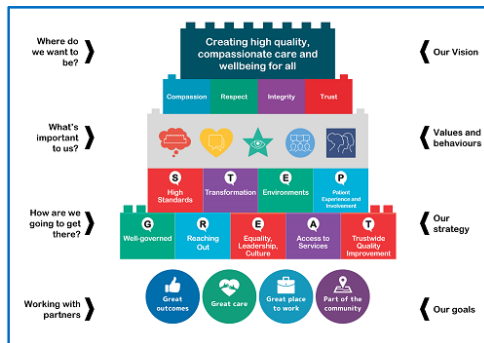


Trust Board – 27 September 2022 – Chair’s Report

Purpose of the report

Chairs report for information and accountability, summarising activities, and key events From 26 July 2022 to 27 September 2022.



Leicestershire and Rutland's
 Community and Mental Health Charity

<p><u>Hearing the patient and staff voice</u></p>	<ul style="list-style-type: none"> • The Chair and Non-Executive Directors have been on Boardwalks to meet staff and patients in frontline services. We have visited the following areas: <ul style="list-style-type: none"> ○ District Nursing Charnwood ○ District Nursing City West ○ Agnes Unit ○ The Willows ○ Stroke Services at the Leicester Royal Infirmary ○ Integrated Community Specialist Palliative Care team ○ Clinical Neuropsychology ○ Family Therapy team ○ Bradgate Unit Occupational Therapy team ○ Adult Psychology ○ Mental Health Urgent Care Hub ○ Quality Assurance Committee chair visit to Beacon Unit and Agnes Unit • Chair attended the Integrated Care System public “Meet the Board” session which invited questions from the public on primary care.
<p><u>Connecting for Quality Improvement</u></p>	<ul style="list-style-type: none"> • Presented the Gold Award to Coleman Ward for the best in show garden in the mental health services “Lets Get Gardening” Competition. Thank you to the staff and patients for creating a beautiful garden. <p>Thank you to all the wards that participated this year, the standard was high and had demonstrated the positive impact of gardening as therapy for patients.</p>
<p><u>Promoting Equality Leadership &</u></p>	<ul style="list-style-type: none"> • Visited the Hinckley & Bosworth community hospital staff health and wellbeing roadshow • Joined the South Asian Heritage Month staff events jointly hosted by the BAME

<u>Culture</u>	<p>networks in LPT and NHFT</p> <ul style="list-style-type: none"> • Attended the NHSE compassionate cultures training • Connected with the LPT Health and Wellbeing champions at the monthly meeting
<u>Building strong Stakeholder relationships</u>	<p><u>LLR Integrated Care System:</u></p> <ul style="list-style-type: none"> • Attended LLR Integrated Care Board (ICB) meetings which covered the current operational, financial, and quality priorities for the Integrated Care System (ICS) • Chaired the monthly LLR ICS Finance Committee meetings focusing on 2022/23 revenue spend, capital programme, transformation, and key risks. • Attended the ICB development workshop which focused on strategy, finance, workforce and Winter plan for LLR. • 1:1 meetings with John MacDonald Chair of UHL, David Sissling Chair of LLR ICS, including a joint visit to UHL's stroke services • Presented LPT's Step up to Great strategy to the LLR Non-Executives from the ICB, UHL and LPT in a joint workshop session for members of the ICS. • Attended the City Health & Wellbeing Board which focused on the pharmaceutical needs assessment, health and wellbeing strategy and health inequalities. <p><u>Other stakeholders:</u></p> <ul style="list-style-type: none"> • Joined the regional and East Midlands Chairs briefings • Attended Leicester Academic Health Partners meeting which focused on research developments in LLR • University of Leicester Council meeting and Finance Committee meeting
<u>Good Governance</u>	<ul style="list-style-type: none"> • LPT Board development session held on 23 August which focused on safeguarding, cyber threat, workforce development and governance. • Chaired the Joint Working Group for LPT & NHFT where we considered group strategy, value based healthcare and received an update on Together Against Racism. • Interviewed for a Consultant Psychiatrist
<u>Raising Health LPT's Charity</u>	<ul style="list-style-type: none"> • The charity is hosting several staff roadshows at LPT sites to increase its visibility to patients and staff. We are working closely with the Health & Wellbeing team to provide extra wellbeing support for our staff. • Our current fundraising appeals are detailed on our website https://www.raisinghealth.org.uk/

Abbreviations:

NHSE = NHS England

LLR = Leicester, Leicestershire & Rutland

ICS = Integrated Care System

ICB = Integrated Care Board

NHFT = Northamptonshire Healthcare Foundation Trust

UHL = University Hospitals of Leicester

Governance table

For Board and Board Committees:	Trust Board 27 September 2022	
Paper sponsored by:	Cathy Ellis	
Paper authored by:	Cathy Ellis	
Date submitted:	15 September 2022	
State which Board Committee or other forum within the Trust's governance structure, if any, have previously considered the report/this issue and the date of the relevant meeting(s):	N/A	
If considered elsewhere, state the level of assurance gained by the Board Committee or other forum i.e. assured/ partially assured / not assured:	N/A	
State whether this is a 'one off' report or, if not, when an update report will be provided for the purposes of corporate Agenda planning	Reported every public board meeting	
STEP up to GREAT strategic alignment*:	High Standards	X
	Transformation	X
	Environments	
	Patient Involvement	X
	Well Governed	X
	Reaching out	X
	Equality, Leadership, Culture	X
	Access to Services	
	Trust Wide Quality Improvement	X
Organisational Risk Register considerations:	List risk number and title of risk	N/A
Is the decision required consistent with LPT's risk appetite:	N/A	
False and misleading information (FOMI) considerations:	None	
Positive confirmation that the content does not risk the safety of patients or the public	Yes	
Equality considerations:	Yes reflects the role of our staff networks and personal commitment to inclusion	