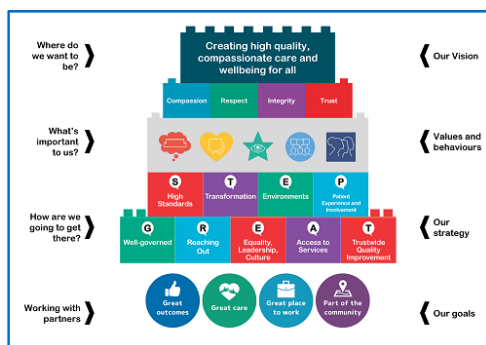


Trust Board – 26 September 2023 – Chair’s Report

Purpose of the report

Chair’s report for information and accountability, summarising Chair and Non-Executive Director activities and key events relating to the Well-Led framework. The report includes reference to transitional activities undertaken in the period up to my formal appointment on 3 September. A report from Cathy Ellis as the former Chair is also associated at Appendix A.



Analysis of the Issue

Chair and NED Induction

Several handover meetings were held with the former Chair to ensure a smooth transition into the organisation. I extend my thanks to Cathy Ellis for her care and diligence in this respect. I have also had one-to-one meetings with most Board Directors and the remainder are scheduled.

I welcome the appointment of Professor Elizabeth Anderson as our new NED representing the University of Leicester and look forward to supporting her Induction with the Deputy Chair.

Updates to NED Roles and Responsibilities

Changes to roles and responsibilities are highlighted in bold below:

| <u>Committee / Role</u> | <u>NED(s)</u> |
|------------------------------|---|
| Senior Independent Director | Ruth Marchington |
| Deputy Chair | Faisal Hussain |
| Audit & Risk Committee (ARC) | Hetal Parmar (Audit Chair) Alexander Carpenter (representing FPC) Josie Spencer (representing QSC) |
| Remuneration Committee | Crishni Waring (Chair) Alexander Carpenter Faisal Hussain Josie Spencer Ruth Marchington |

| | |
|---|--|
| | Professor Elizabeth Anderson |
| Charitable Funds Committee | Crishni Waring (Chair) Faisal Hussain |
| Quality & Safety Committee (QSC) | Josie Spencer (QSC Chair) Ruth Marchington Professor Elizabeth Anderson |
| Finance & Performance Committee (FPC) | Alexander Carpenter (FPC Chair) Faisal Hussain Ruth Marchington / Josie Spencer (QSC link) |
| People & Culture Committee (PCC) | Ruth Marchington (Chair / QSC link) Faisal Hussain (FPC link) |
| LLR Integrated Care Board Finance Committee | Alexander Carpenter |
| LLR Integrated Care Board Quality & Performance Committee | Josie Spencer |
| LPT / NHFT Joint Working Group | Crishni Waring Faisal Hussain (Co-Chair from next meeting) |
| Wellbeing Guardian | Alexander Carpenter |

A new Deputy Chair role description is in development with input from different colleagues, including NHSE, to strengthen the support for the Chair role in the context of the Group model. This has been agreed with LPT and NHFT Deputy Chairs and will be implemented from 1 October with regular reviews thereafter and a formal review in March 2024 to confirm effectiveness.

Public, Patient and Staff Engagement

I was delighted to open the Trust's Annual Public Meeting and facilitate the Question-and-Answer session. The event was very well-attended and a good range of questions were posed to Board members.

The Deputy Chair attended the International Nurses Graduation Ceremony and will be supporting a Health and Wellbeing Roadshow this month. The Senior Independent Director held a catch-up meeting with our Freedom to Speak Up Guardians.

Additional NED Boardwalks completed or planned in-month include the Healthy Together Service and Coalville Wound Clinic. I am also looking forward to joining my first Team Brief, the Celebrating Excellence Awards and the LPT Educators Conference, all of which will afford an excellent opportunity to meet more colleagues.

Promoting Equality and Inclusion

Several colleagues attended all or part of the APNA Conference (Asian Professionals National Alliance) including the Deputy Chair, the Chief Executive and myself. It was an excellent opportunity to focus on workforce and health inequality challenges and hear diverse voices and experiences of colleagues from across the NHS and beyond.

Working with Partners and Stakeholders

I attended my first LLR ICB Board meeting and Development session and had the opportunity to meet a variety of system colleagues. Regular meetings have been established with the ICB and UHL Chairs.

The LPT Head of Strategy and Partnerships and myself met with the Bishop of Leicester to discuss the City's Homelessness Charter and other opportunities for community engagement.

Raising Health

I will be chairing my first Charitable Funds Committee on 30 September.

Proposal

The Board of Directors is invited to consider the content of this report and highlight any areas for discussion or clarification.

Decision Required

The Board of Directors is asked to:

- Welcome and support the induction of Professor Elizabeth Anderson.
- Support the changes to NED roles and responsibilities.

Governance table

| | | |
|---|--|------------------------------------|
| For Board and Board Committees: | Trust Board 26 September 2023 | |
| Paper sponsored by: | Crishni Waring | |
| Paper authored by: | Cathy Ellis and Crishni Waring | |
| Date submitted: | 18 September 2023 | |
| State which Board Committee or other forum within the Trust's governance structure, if any, have previously considered the report/this issue and the date of the relevant meeting(s): | N/A | |
| If considered elsewhere, state the level of assurance gained by the Board Committee or other forum i.e. assured/ partially assured / not assured: | N/A | |
| State whether this is a 'one off' report or, if not, when an update report will be provided for the purposes of corporate Agenda planning | Reported every public board meeting | |
| STEP up to GREAT strategic alignment*: | High Standards | X |
| | Transformation | X |
| | Environments | X |
| | Patient Involvement | X |
| | Well Governed | X |
| | Reaching out | X |
| | Equality, Leadership, Culture | X |
| | Access to Services | X |
| | Trust Wide Quality Improvement | X |
| | Organisational Risk Register considerations: | List risk number and title of risk |
| Is the decision required consistent with LPT's risk appetite: | N/A | |
| False and misleading information (FOMI) considerations: | None | |
| Positive confirmation that the content does not risk the safety of patients or the public | Yes | |
| Equality considerations: | Yes reflects the role of our staff networks and personal commitment to inclusion | |

Appendix A

| | |
|---|--|
| <p><u>Hearing the patient and staff voice</u></p> | <ul style="list-style-type: none"> The Chair and Non-Executive Directors have been on Boardwalks to meet staff and patients in our services: <ul style="list-style-type: none"> Beaumont Ward Employment Support Services Speech & Language team in Directorate of Mental Health |
| <p><u>Connecting for Quality Improvement (QI)</u></p> | <ul style="list-style-type: none"> Joined the Foundations for Great Patient Care meeting which focused on inpatient catering services. |
| <p><u>Promoting Equality Leadership & Culture</u></p> | <p><u>Recognising Staff:</u></p> <ul style="list-style-type: none"> Very proud to attend the graduation ceremony for our international nurses and the presentation of the national award for pastoral care <p><u>Promoting an Inclusive Culture:</u></p> <ul style="list-style-type: none"> Joined the inclusive leadership event The NED team have agreed to co-sponsor the key themes from the Our Future Our Way feedback to support change leaders and Executive sponsors <p><u>Championing Health & Wellbeing:</u></p> <ul style="list-style-type: none"> Attended the Hinckley Health and Wellbeing roadshow to connect with staff Joined the Health and Wellbeing Champions meeting to look at excellent practice across LPT and develop new ideas for 2023/24 |
| <p><u>Building strong Stakeholder relationships</u></p> | <p><u>LLR Integrated Care System:</u></p> <ul style="list-style-type: none"> Attended August LLR ICB public board meeting which included: community pharmacy; NHS dentistry; the NHS Long-term Workforce plan; Winter Plan 2023/24; and performance reports. Chaired the monthly LLR ICS Finance Committee meetings in July and August focusing on 2023/24 financial performance to date; recovery programme; transformation through delivery partnerships, and key risks. Meetings with David Sissling (Chair LLR ICS) & John MacDonald (Chair UHL) |
| <p><u>Good Governance</u></p> | <ul style="list-style-type: none"> LPT Board development session held on 22 August which included: Our Future Our Way feedback from Change Champions on LPT culture; a review of the Freedom to Speak up Reflection tool; NHSE Workforce plan, People Promise Exemplar; Community Capacity and deferred visits; The People's Council and the Well-Led framework. Participated in Deputy CEO / Managing Director interviews Recruited new Non-Executive Director Liz Anderson who will be representing the University of Leicester on our Board to connect our organisations and champion teaching students and research |
| <p><u>Raising Health LPT's Charity</u></p> | <ul style="list-style-type: none"> Chaired the Charitable Funds committee Raising Health are joining the Health & Wellbeing team on Roadshows to increase the charity profile and provide extra wellbeing support for our staff. Our current fundraising appeals are detailed on our website https://www.raisinghealth.org.uk/ |

Abbreviations:

LLR = Leicester, Leicestershire & Rutland

ICS = Integrated Care System, ICB = Integrated Care Board

NHFT = Northamptonshire Healthcare Foundation Trust, UHL = University Hospitals of Leicester