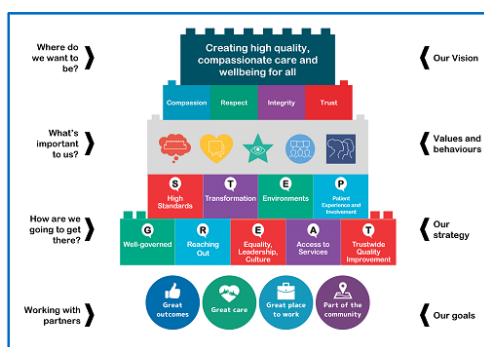


Trust Board – 28 November 2023 – Chair’s Report

Purpose of the report

This is a regular report for information and accountability, summarising Chair and Non-Executive Director (NED) activities and key events relating to the Well-Led framework since the last Board meeting. Activities relating to formal Committees of the Board will be reported through custom reports.



Analysis of the Issue

Public, Patient and Staff Engagement

NED Boardwalks completed in the period include:

- Swithland Ward at Loughborough Hospital
- Northwest Leicestershire Community Nursing Hub
- Procurement Team
- CAMHS Eating Disorders
- Children’s Speech & Language Service
- Aston Ward, BMHU

I was pleased to meet with the Programme Management Office (PMO) Team and the Volunteering Manager to understand their roles and responsibilities, and to attend two Team Briefs.

Equality, Leadership and Culture

It was a great pleasure to welcome and introduce the National Freedom to Speak Up (FTSU) Guardian, Dr Jayne Chidgey-Clarke at an inclusive leadership masterclass marking Freedom to Speak Month for both LPT and NHFT. The event was open to all staff and was also attended by both Senior Independent Directors for LPT and NHFT in their capacity as NED Leads for FTSU.

I was delighted to join the Trust's REACH Network meeting in October to introduce myself and hear directly from colleagues who are members of the network. I also met the Trust's Head of EDI to understand the work underway within the organisation and the wider system.

Josie Spencer, QSC Chair, joined the celebration event for the Director of Nursing and AHP Fellowship Programme alongside other colleagues. Whilst I was not able to attend the event, it was great to subsequently hear about the programme and the opportunities it provides from the Trust's Senior Nursing Research Leader.

Working with Regional colleagues, I led a Board Governance and Assurance workshop for over 30 colleagues in the Midland's Aspirant Director Talent Pool.

Working with Partners and Stakeholders

There were several meetings with Chair, CEO and Finance colleagues from LLR to discuss the system's financial position and a separate meeting with the Chief Operating Officer for the ICB to explore the LLR landscape, particularly in relation to health inequalities. These were in addition to more routine meetings between provider Chairs and the ICB Chair. NEDs continue to engage with relevant ICB Committees where possible.

NED Appraisals

Mid-year reviews have been scheduled for NEDs who started the year and are currently being undertaken. This includes a review of progress against objectives and NED lead or champion roles.

Board Development

A workshop took place on 24 October, led by the Deputy Chair, at which the Board:

- Reviewed progress on the development of its Board Assurance Framework.
- Considered its risk appetite.
- Agreed to pilot a new format of Highlight Report.
- Reflected on its preparedness for CQC inspection.
- Received an update on the changes to the Fit and Proper Persons Requirements.
- Reviewed its current Collaborative arrangements.

Raising Health

I accompanied Raising Health's Fundraising Manager to a meeting with the Carlton Hayes Trustees to report on the use of their grant funding and wider developments within the Trust. Bids for the next round of Carlton Hayes grants have been submitted and are in the process of being evaluated. Current fundraising appeals are detailed on the charity's website <https://www.raisinghealth.org.uk/>

Proposal

The Board of Directors is invited to highlight any areas for discussion or clarification.

Decision Required

The Board of Directors is asked to note the content of this report.

Governance table

For Board and Board Committees:

Paper sponsored by:

Trust Board 28 November 2023

Crishni Waring

Paper authored by:	Crishni Waring	
	20 November 2023	
Date submitted:	N/A	
State which Board Committee or other forum within the Trust's governance structure, if any, have previously considered the report/this issue and the date of the relevant meeting(s):	N/A	
If considered elsewhere, state the level of assurance gained by the Board Committee or other forum i.e. assured/ partially assured / not assured:	Reported at every public board meeting	
State whether this is a 'one off' report or, if not, when an update report will be provided for the purposes of corporate Agenda planning	Reported at every public board meeting	
	STEP up to GREAT strategic alignment*:	
	High Standards	X
	Transformation	
	Environments	
	Patient Involvement	X
	Well Governed	X
	Reaching out	X
	Equality, Leadership, Culture	X
	Access to Services	
	Trust Wide Quality Improvement	X
	Organisational Risk Register considerations:	List risk number and title of risk
Is the decision required consistent with LPT's risk appetite:	N/A	
False and misleading information (FOMI) considerations:	None	
Positive confirmation that the content does not risk the safety of patients or the public	Yes	
Equality considerations:	Yes reflects the role of our staff networks and personal commitment to inclusion	

Abbreviations:

LLR = Leicester, Leicestershire & Rutland

ICS = Integrated Care System, ICB = Integrated Care Board

NHFT = Northamptonshire Healthcare Foundation Trust, UHL = University Hospitals of Leicester

REACH = Race, Ethnicity & Cultural Heritage, EDI = Equality, Diversity & Inclusion

QSC = Quality & Safety Committee, AHP = Allied Health Professionals

CEO = Chief Executive Officer

CAMHS = Children and Adolescent Mental Health Services, BMHU = Bradgate Mental Health Unit