

AUGUST 2025

LPT Research and Development

CHS RESEARCH UPDATE



Leicestershire Partnership NHS Trust is a research active organisation. We have a Research and Development Team who aim to ensure that all staff and patients in LPT have the opportunity and support to be involved in research that underpins the quality of care we deliver in the Trust.

In this newsletter you can find out about the research LPT's R&D Team is currently supporting within the Community Health Services Directorate, along with research updates!

Research Studies in CHS

● PACMAN

The PACMAN study is focused on developing and evaluating strategies to support patients with indwelling pleural catheters (IPCs) in managing their care independently. The study aims to identify the support needs of patients and their families, explore barriers and motivators to self-management, and understand healthcare professionals' attitudes and practices related to IPC care. By working collaboratively with stakeholders, the PACMAN study seeks to co-develop an effective, patient-centred intervention that enhances self-management capabilities and improves overall outcomes for individuals living with IPCs.

Principal Investigator: Dr Adam Peel

Research Delivery Team: Dr Sarah Baillon



TRanscutaneous Iimb reCovEry Post-Stroke

● TRICEPS

Many stroke survivors experience arm weakness. The TRICEPS study is investigating whether stimulating the vagus nerve using a small earpiece alongside rehabilitation therapy can improve arm function in patients with arm weakness after a stroke.

Principal Investigator: Rosie Turner

Research Delivery Team: Beki Pole, Demelza Shirton, Jo Hall, Victory Olutuase

LPT Staff: Natalie Bate, Sarah-Jane Walker

For more information about anything in this research update please contact
lpt.research@nhs.net

● Self-care for women with HFpEF and MLTCs

Heart failure with preserved ejection fraction (HFpEF) is one of two main types of heart failure. The researchers are investigating self-care practices of women living with HFpEF compared to men living with HFpEF, and both men and women living with other types of heart failure.



Principal Investigator: Gemma Slack

Research Delivery Team: Dr Sarah Baillon, Demelza Shirton

● CLEANVLU2



The SolasCure VLU study evaluates the safety, efficacy, and healing potential of 24U/mL Aurse Wound Gel compared to standard care in treating wounds. It assesses adverse events, wound debridement, healing rates, and quality of life over several weeks to determine if the gel improves wound management outcomes.

Principal Investigator: Dr. Anuj Chahal

Research Delivery Team: Dr Sarah Baillon

● REACH HFpEF

LPT's heart failure rehab team has been part of this national study evaluating a facilitated home-based rehabilitation intervention in patients with heart failure with preserved ejection fraction. Participants will receive either 12 weeks of a new standardised home-based rehabilitation programme or usual care.



Principal Investigator: Prof. Iain Squire

Research Delivery Team: Dr Sarah Baillon, Lynne Hartwell, Tom Pringle, Naomi Gurr, Jo Hall, Victory Olutuase

LPT Staff: Dr Lizelle Bernhardt, Dr Sudip Ghosh, Tanzeem Adam, Emma Milward, Sunjeeta Powar

● Podiatry Studies



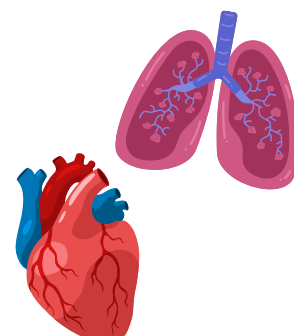
LPT's Podiatry Team are supporting recruitment to studies involving patients with diabetic foot ulcers. The MiFoot study is testing a programme designed to improve heart health in people with diabetes and diabetes-related foot ulcers. Whilst the DFU Survey study aims to better understand and characterise the diabetic foot ulcer (DFU) patient population.

Principal Investigator: Lesley Weaving

Research Delivery Team: Dr Sarah Baillon, Demelza Shirton, Jo McGarr, Victory Olutuase

● RAMP

People with cardiac and respiratory conditions can experience poorer quality of life and shorter length of life, compared to people without. The RAMP Study set out to review Cardiac Rehabilitation data in Leicester (across LPT and UHL) to better understand who attends and who has better outcomes following their attendance. This study is now closed, and a stakeholder workshop to inform the study findings was completed in October 2024.



Chief Investigator: Dr Lizelle Bernhardt

For more information about anything in this research update please contact
lpt.research@nhs.net

CRA Programme Research

The Clinical Research Associate (CRA) programme is jointly supported by LPT and De Montfort University, provides a 0.4WTE secondment over 2 years for CRAs to develop and understand a research project in LPT, whilst enhancing their research knowledge and skills through training needs analysis and attending appropriate courses at De Montfort University. There are two CRAs in CHS who are currently undertaking their research studies:

- **Improving shared care for patients with venous leg ulcers using an aid**

This research aims to investigate challenges that patients and healthcare professionals may face when beginning shared care, an approach where healthcare providers support patients to actively manage their wounds. The information gathered from patients and healthcare professionals in this study will be analysed to create an aid for patients to improve their confidence in shared care and their wound healing.



Chief Investigator:
Georgina Wynn-Williams

- **What are the experiences and expectations of patients, families, and staff of rehabilitation in a community hospital?**

This research study aims to explore the experiences and expectations of patients, families and staff of their expectations, of rehabilitation processes regarding a stay on a community hospital ward. The findings from this research study will inform future research around improving the effectiveness of rehabilitation in community hospital settings.



Chief Investigator:
Tanya Riddlesdell

Ad Hoc Charitable Funds 2025

WeResearch

Leicestershire Partnership
NHS Trust



Apply for Ad Hoc Research Charitable Funds!



Calling all LPT staff members!

Would you like to:

Attend a research conference? Write up a piece of research you have conducted for publication?

Complete some research training?

You can apply for Ad Hoc Research Charitable Funds. The Ad Hoc Funding Scheme is open all year round



Funding for applications up to £500 per applicant
(funding for higher amounts may be considered)

To apply, simply request the Ad Hoc funding application pack by emailing:



lpt.research@nhs.net

Join the Research Interested Mailing List

Are You Interested in keeping Up-to-Date with
Research in LPT?

Sign Up to Our Mailing List Today!

Click [HERE](#) or scan the QR Code

