

Leicestershire Partnership and
Northamptonshire Healthcare
Associate University Group



Group sustainability annual report

2025/26 - 2026/27



Contents

3. Foreword

4-6. Leading sustainability

7-10. Our carbon footprint

11-12. Our green plans

13-14. Leadership

15-17. Adaption

18-20. Digital

21-23. Estates

24-26. Food

27-28. Low carbon care

29-31. Medicines

32-33. Procurement

34-36. Travel and transport



Foreword

I am delighted to introduce this year's sustainability report and share the progress we are making to deliver high-quality, compassionate and environmentally sustainable healthcare for the future. Climate change is one of the greatest threats to public health, affecting the wellbeing of our communities, increasing demand on services and widening health inequalities. As NHS organisations, we recognise our responsibility to respond and to lead by example.

Across our Group, sustainability is becoming embedded into the way we plan and deliver care. From reducing carbon emissions and improving our estate, to greener travel, sustainable procurement and preventative healthcare, we are working towards the NHS ambition of becoming the world's first net zero healthcare system while improving outcomes for our patients and communities.

This report showcases the commitment, innovation and collaboration of colleagues and partners across our organisations. Their work demonstrates how sustainability can support not only environmental improvement, but also stronger communities, better value and healthier lives. Partnership working remains central to our approach as we continue to work alongside local organisations, suppliers and communities to maximise our collective impact.

While there is still much more to do, I am proud of the progress we are making together and optimistic about the future. Sustainability is not separate from excellent healthcare —it is fundamental to it.

Thank you

Paul Sheldon,

Chief Finance Officer and Executive Sustainability Lead



Leading sustainability

Our corporate approach to net zero



Our Group sustainability ambitions

Leicestershire Partnership and
Northamptonshire Healthcare
Associate University Group



Our sustainability ambitions connect to our Group THRIVE strategy - and frame how our green plans are delivering a net zero Leicestershire Partnership and Northamptonshire Healthcare Associate University Group.



Technology

Leverage digital innovation to enhance care access and quality while reducing emissions through smarter working, virtual care, and sustainable digital infrastructure.



Healthy Communities

Improve local air quality and be a leader in high quality, sustainable models of care with lean service delivery, minimal waste and low carbon alternatives.



Responsive

Adapt to climate change and be a climate resilient organisation, ensuring access to our health services for patients, staff, families and carers.



Including Everyone

Engage staff, patients, volunteers and partner organisations in co-produced solutions and empower staff to innovate through sustainable quality improvements.



Valuing People

Look after the health and wellbeing of our staff, patients and carers through healthier, locally produced food and the enjoyment of biodiverse, enriching green spaces.



Efficient and Effective

Achieve NHS net zero carbon emissions targets across the Trust and our wider sphere of influence through careful stewardship of resources, including greener medicines practices, reducing waste, adopting circular approaches, and minimising the environmental impact of all our activities.

Green plan governance



Leicestershire Partnership and
Northamptonshire Healthcare
Associate University Group



We have strengthened our sustainability governance in line with 2025 NHS England and CQC guidance and to reflect our commitment to delivering high quality, companionate and low carbon care. Sustainability and Green plan delivery is now firmly embedded in our leadership model.

- **Net Zero Lead:** Delivery of our green plans is overseen by a designated board-level Net Zero Lead, for Leicestershire Partnership Trust and Northamptonshire Healthcare NHS Foundation Trust, this sits with the Chief Finance Officer.
- **Group Oversight:** In line with NHSE Green plan implementation guidance our Green plans and sustainability work streams are overseen by a range of senior leadership roles and functions via Group Strategic Executive Board (SEB)
- **Performance Committee:** Each Trust receives Green plan delivery assurance.

Our Group level Sustainability Programme committee:

Chaired and overseen by our Net Zero Lead and Chief Finance Officer, bringing together Green plan leaders from each Trust, representing the 9 Green plan chapters plus enabling workstream representatives.

This new Group level forum is where the sustainability thinking and innovation can take place once in the Group space, and through collaboration and shared learning, drives delivery tailored to each Trust or Group schemes.

Our Group Sustainability Programme also oversees our environmental carbon emissions performance and works to embed sustainable thinking in our everyday decision making.



Leicestershire Partnership and
Northamptonshire Healthcare
Associate University Group



Our carbon footprint

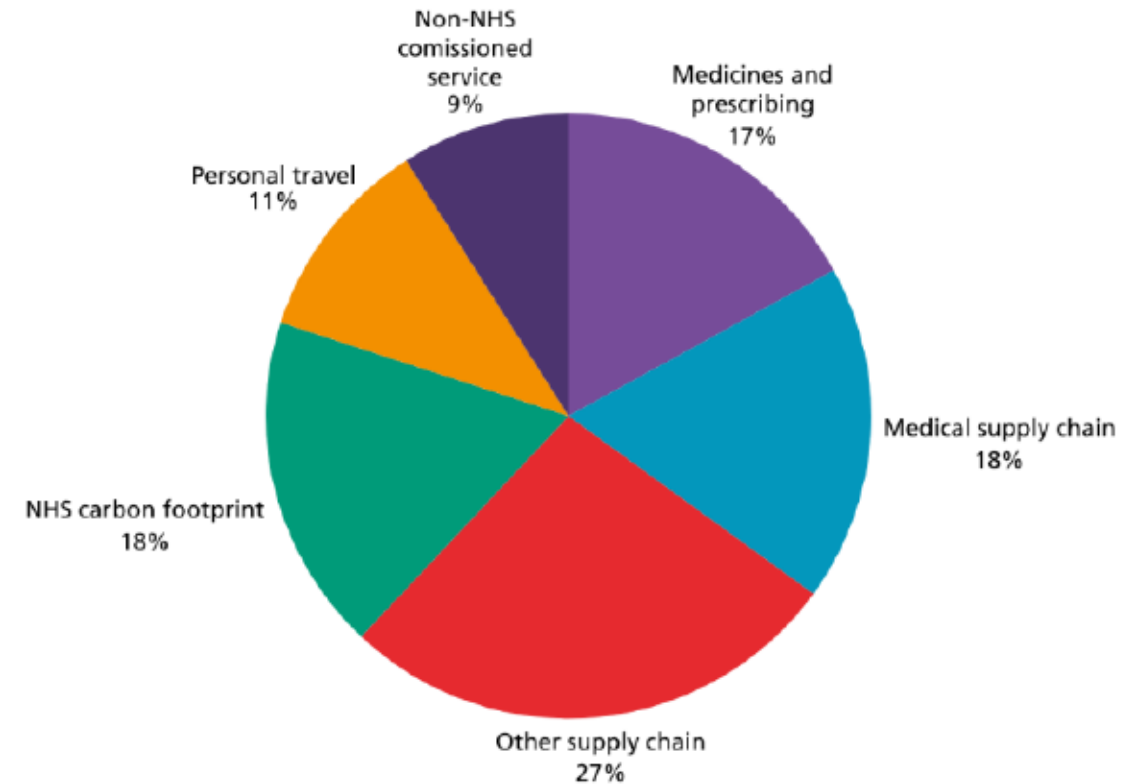
Benchmarking where we are now

The NHS carbon footprint

A carbon footprint is how much carbon dioxide is produced by a single organisation or activity and for the NHS carbon footprint plus was reported as 27.3 million tons of carbon dioxide equivalent (MtCO₂e) for 2024/25.

Breakdown of emissions by proportion of the NHS Carbon Footprint Plus

- 27% was produced by other supply chains
- 18% was produced by medical supply chains
- 17% was produced by medicines and prescribing
- 11% was produced by personal travel
- 9% was produced by non-NHS commissioned services
- 18% is attributed to the NHS carbon footprint, which includes fleet and business travel; inhalers and anaesthetic gases; waste, water and refrigerants and buildings energy.



Our carbon footprint

This report presents the carbon footprint for Northamptonshire Healthcare NHS Foundation Trust (NHFT) covering the period 1st April 2024 to 31st March 2025.

Emissions are reported for individual activities and aggregated into scope totals in line with the NHS Net Zero targets. For context, the report also includes the underlying activity data (e.g., gas and electricity usage) that drives these emissions. The analysis reviews each emission source, compares performance with the previous year (2023/24), and provides explanations for observed increases or reductions.

NHS England has broken the total NHS carbon footprint into 3 more manageable footprints that help direct focus for optimum impact.

- **Scope 1** – Direct emissions from healthcare activity.
- **Scope 2** – Indirect emissions from purchased energy.
- **Scope 3** – All other indirect emissions (with supply chain activity the biggest driver).

Key findings:

- Total carbon emissions in 2024/25 were 47,163 tonnes of carbon dioxide equivalent (tCO₂e) a 3% increase compared to 45,917 tCO₂e in 2023/24.
- To meet NHS Net Zero targets, NHFT must achieve an annual reduction of 6.25% for Scopes 1 and 2, and 5.00% per year when including Scope 3 emissions.

Source	Carbon emissions (t CO ₂ e)	Carbon emissions (t CO ₂ e)	% change
	23/24	24/5	
Scope 1			
Natural gas	2,251	2,302	2%
Travel	1,002	1,091	9%
Scope 2			
Electricity	1,313	1,284	-2%
Scope 3			
Water consumption	9.44	8.01	-15%
Water treatment	11.45	9.25	-19%
Taxi travel	16.95	13.62	-20%
Train Travel	1.53	1.00	-35%
Flights (Domestic)	0.00	0.70	100%
Waste disposal	2.63	2.81	7%
Electricity transmission & distribution	114	118	3%
Procurement	41,195	42,333	3%
Grand total emissions (all scopes)	45,917	47,163	3%

Northamptonshire Healthcare NHS Foundation Trust carbon emissions commentary

Source	Units	23/24	24/25	% change
Electricity	kWh	6,342,436	6,435,188	1%
Natural gas	kWh	12,457,203	12,583,019	1%
Business travel	miles	3,729,097	4,061,439	9%
Water consumption	m3	61,660	52,330	-15%
Water treatment	m3	61,660	49,808	-19%
Taxi travel	km	81,449	65,470	-20%
Train travel	passenger.km	43,243	28,048	-35%
Waste disposal	tonnes	402	429	7%
Flights (Domestic)	passenger.km	0	3,074	100%
Procurement (£)	£ spent	120,563,539	123,894,524	3%

- Electricity consumption went up slightly, Overall, the 1% increase in consumption is within the normal range of annual variation, and the associated reduction in reported emissions highlights the impact of a greener grid supply mix.
- Gas consumption increased by 1% - this rise in underlying consumption is likely explained by seasonal variation, as gas use is strongly influenced by external temperatures. For example, a slightly cooler winter will increase heating demand. Overall, this level of change is considered to be within the normal range of annual variation.
- Business travel and emissions have risen due to an increase in number of appointments completed and an increase in the number of referrals for some of our community services
- Water consumption dropped and corresponding emissions went down, with continued improvement in data reliability.
- We saw a reasonable decrease in taxi miles and corresponding drop in carbon emissions.
- Increase in waste weights disposed of (informed by improved data quality)
- There were a small number of domestic flights in 2024/25, whereas none were reported in 2023/24. This explains the observed 100% increase year-on-year, though the overall impact on the Trust's footprint was minimal at just 0.70 tCO₂e.
- Increase in procurement spend is driving a subsequent increase in carbon emissions.
- *The focus in 2025/26 has been on developing a report for NHFT, with LPT benchmark reporting in a planning stage.

Leicestershire Partnership and
Northamptonshire Healthcare
Associate University Group



Our green plans

How we will realise our ambitions

Introducing our green plans

Leicestershire Partnership and
Northamptonshire Healthcare
Associate University Group



The primary goal of Green plans is to reduce carbon emissions through innovation and best practice across nine focus areas within the organisation.

Our Green plans describe our journey so far and set out how Leicestershire Partnership Trust and Northamptonshire Healthcare NHS Foundation Trust will achieve national net zero carbon targets. Achieving net zero also supports Lord Darzi's plan to shift from a sickness health service to a prevention health service.

- Net zero for direct emissions by 2040
- Net zero for indirect emissions by 2045

Carbon reduction initiatives by their nature, often reduce waste and generate efficiency savings as an additional benefit – supporting the financial sustainability of each Trust.

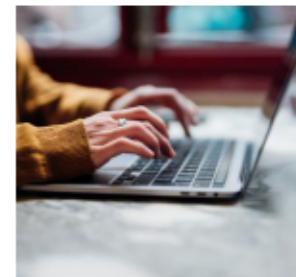
LPT and NHFT Trust Green plans were created in partnership with Loreus Consulting. Loreus is an international, quality provider of environmental support helping organisations, from both the public and private sectors to improve their environmental performance.

Loreus were commissioned to write our Trust Green plans through a process of co-production with stakeholders from each Trust for each of the nine Green plan chapters and reflect Trust knowledge, insight and expertise.

The nine areas of focus cover decarbonising care and buildings, greener travel and supply chains to ensure a healthier planet and local population.



Leadership



Digital



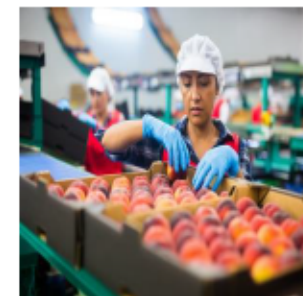
Medicines



Low carbon care



Travel & Transport



Food



Procurement



Estates



Adaptation

Leicestershire Partnership and
Northamptonshire Healthcare
Associate University Group



Leadership

Our green plans

Our sustainable leadership approach

Our teams are the engine room behind our Trust Green plans. Policies, targets and technology only translate into carbon reduction when our leaders prioritise them and embed sustainability into everyday decisions and behaviours.

Green plan focus

We recognise the pivotal role our leaders play in reaching our Green plan ambitions. We also understand, as a Well Led organisation that we must strive to reduce any negative impact of our activities on the environment and support people to do the same.

Green plan 2025-2028

We will:

- Implement a joint Trust sustainability communications plan to raise sustainability awareness, inspire and empower our workforce to make sustainable change.
- Develop a voluntary staff Green network proposal that creates a space for staff-led sustainability ideas, with a clear line of sight to our Trust and Green plan priorities.
- Develop sustainability events that encourage and recognise sustainable ideas and behaviour.
- Promote free education and training resources available to NHS staff, such as Greener NHS training hub, Royal Colleges and the Centre for Sustainable Healthcare



Leicestershire Partnership and
Northamptonshire Healthcare
Associate University Group



Adaptation

Our green plans

Greening and adapting our estate

We can all see that extreme weather events like flooding and heatwaves are happening more frequently. The science is clear that rising temperatures are responsible for excess deaths. For example, the 2018 heatwave recorded 8,500 UK deaths in the UK according to the Lancet Countdown report.

Green plan focus

We recognise this means we need to adapt our buildings to protect our services from adverse weather impacts.

We are also working to boost the biodiversity of our green spaces to offset our carbon emissions and create pleasant outdoor spaces for staff, patient and visitor wellbeing.

Green plan 2025-2028

We will

- Integrate climate change into our Business Continuity policies.
- Mitigate climate change risk by using the NHS England Climate Change Assessment Framework and Risk Assessment Tool as part of a continuous cycle for protecting our estate.
- Strengthen the operational governance and leadership overseeing climate change and resilience across the organisation.
- Plan Emergency Preparedness Resilience & Response (EPRR) into any future buildings and green space infrastructure decisions for things like drainage and resilience against adverse climate conditions.
- We robustly adopt UK Health Security Agency alerts and command / control response plans.
- Board approved Adverse Weather Plan sets out our response to a range of severe weather conditions.



Greening and adapting our estate highlights

Leicestershire Partnership and
Northamptonshire Healthcare
Associate University Group



- Both Trusts are working to boost the biodiversity of our green spaces to offset our carbon emissions and create pleasant outdoor spaces for staff, patient and visitor wellbeing.
- This includes collaborating with our staff, charity and volunteer partners on a range of projects to enhance the biodiversity, carbon offsetting and enjoyment of green spaces.
- We are a member of the NHS Forest and planted 120 native fruit, nut and berry trees, which supports pollinators, insects and bird wildlife at Coalville, St Mary's and Berrywood hospitals, with plans to expand our forest further in future.
- Staff at LPT have planted 60 trees as part of the NHS Forest.
 - The saplings will grow at Coalville Community Hospital, on land which is unsuitable for future development. They will help absorb carbon dioxide from the atmosphere and improve the view for some of the hospital's inpatients. The hospital is on the site of a former orchard and includes a number of mature apple trees.



Leicestershire Partnership and
Northamptonshire Healthcare
Associate University Group



Digital

Our green plans

Digital Transformation

Digital transformation is one of the main enablers of achieving a net zero health service. Virtual care such as consultations, remote monitoring and digital triage or advice means fewer patient journeys, reduced staff commuting, enhanced productivity and lower demand on our estate.

Green plan focus.

We are committed to ensuring we have the right digital tools and foundations to be a leading, digitally mature provider of outstanding, compassionate care. This means enabling innovation and opportunity within a supported, reliable, value-driven and sustainable digital infrastructure. This includes supporting decision-making with access to high-quality data that impacts patient experience and outcomes, including reducing inequalities

Green plan 2025-2028

We will:

- Continue to deploy methods of digital communication to help improve patient care and reduce carbon emissions.
- Support a digitally-enabled workforce to get the best out of digital tools.
- Ensure that patients and carers are digitally-enabled to improve their access to information, support, assessment and remotely monitoring options that help manage their health using digital tools.
- Use circular approaches to manage our IT hardware estate – extending device lifetimes and promoting re-use.
- Reduce digital poverty by gifting our redundant IT kit to charities and community groups.
- Promote good data hygiene and responsible use of Artificial Intelligence to reduce the environmental impact of our data servers.
- Promote efficiency and value through digital innovation – by safely introducing new technologies, seeking opportunities where artificial intelligence and robotic processing can provide efficiency benefits while acting as a catalyst for change across our healthcare partners.



Digital transformation highlights

- Leicestershire Partnership NHS Trust and Northamptonshire Healthcare NHS Foundation Trust now operate hybrid and agile working.
- Improvements have been made on the specification of laptops to solid state drives which offer better performance, are more energy efficient and last longer.
- Our primary hardware provider is Dell; a company committed to achieving carbon neutrality in its products.
- We have transitioned most of communication from paper to digital methods – reducing the amount of paper and travel related to post.
- Have partnered with App providers to deliver more virtual initial assessments, remote monitoring and empowering patients with self-management resources.
- We have installed power saving features on PCs across the Trusts' digital estates to reduce energy consumption.
- We are moving more activity into Cloud based services to reduce the need for data server centres. This will help reduce the associated energy, water and carbon emissions as well as improving IT infrastructure resilience against extreme weather events, such as heatwaves.



Leicestershire Partnership and
Northamptonshire Healthcare
Associate University Group



Estates

Our green plans

Our buildings and estates

Building energy use accounts for 11% of the NHS carbon footprint and this makes it one of the most significant areas for achieving environmental and financial performance.

Green plan focus

We are committed to implementing a range of measures that improve energy efficiency, reduce water consumption and the environmental impact of our estate.

Green plan 2025-2028

We will

- Continue to transition away from gas to Air Source Heat Pump technology for heating our buildings.
- Maximise the roll out of renewable energy generation across the estate, for example solar.
- Commission a costed decarbonisation plan.
- Engage with local councils on the Local Area Energy Plan (LAEP) to support expansion of electrification infrastructure.
- Utilise the NHS Net Zero Building Standard for all future new build projects and major refurbishments.
- Review our clinical waste streams with the aim of diverting waste to the offensive waste stream (which will reduce disposal costs and our incineration carbon footprint)



Our buildings and estate highlights

Leicestershire Partnership and
Northamptonshire Healthcare
Associate University Group



Leicestershire Partnership NHS Trust

- Has installed renewable of solar electricity generation panels at Hinkley & Bosworth Community Hospital, Loughborough Hospital, Mill Lodge, Watermead and The Beacon sites.
- Is installing LED lighting in all new builds.
- Is upgrading roof insulation to reduce heat loss.

Northamptonshire Healthcare NHS Foundation Trust

- Has equipped two buildings with solar panels and Air Source Heat Pump technology, providing zero carbon electricity and heating.
- 95% of lighting in Trust owned buildings are now energy efficient LED.
- Low flush toilets have been installed across all sites to reduce water consumption.
- Smart Building Management Systems (BMS) monitor and help optimise energy usage.
- Double glazing and insulation has been upgraded throughout the estate to minimise energy loss.



Leicestershire Partnership and
Northamptonshire Healthcare
Associate University Group



Food

Our green plans

Food & nutrition

The NHS serves millions of meals each year, but food has a significant carbon footprint. This arises from industrial agriculture production, food processing and packaging, refrigeration, transport and food waste. Poor diet is directly linked to preventable disease, and this is why nutrition is an important element of our care and Green plans. Enhancing the sustainability of food and nutrition for patients, staff and visitors is a powerful lever for reducing our carbon footprint, whilst at the same time, improving health outcomes and social value.

Green plan focus

We have implemented innovations and best practice initiatives aimed at reducing food waste, improving healthy options, reducing the impact of food delivery transport and delivering social value.

Green plan 2025-2028

We will

- Pursue continued Soil Association Food For Life accreditation in NHFT.
- Build a food waste baseline measurement to inform target reductions in both Trusts.
- LPT is ready to set food waste weight and financial target reductions.
- Continue to collaborate with our food suppliers to redesign more nutritious - lower carbon menus.
- Expand the roll out the “Blue Plate” trial (research-based trial showing blue coloured crockery enhances appetite) across community hospitals, following positive waste reduction outcomes where it has been deployed.
- Transform patient meal ordering by implementing electronic systems to help reduce over-production and end of service waste.
- Evaluate and potentially adopt recycling of plastic meal trays in LPT.



Food & nutrition highlights

Leicestershire Partnership NHS Trust

- Overall, LPT has made notable progress improving the sustainability of its food service through greater control over food waste, menus and supply chain.
- The Trust began measuring food waste in 2024 and has built understanding of its waste baseline and hot spots.
- Delivered ward staff education and training to support ward level food waste recording.
- Ran a “Blue plate” trial (evidence base research indicates blue crockery improves appetite) on two wards achieved a 25% food waste saving.
- Is using supplier portion planners giving options for patients to request smaller servings also contributed to food waste reductions.
- Reduced food transport emissions as a result of its main supplier relocating its depot closer to the Trust and consolidation of food deliveries from 6 to 2 days a week.

Northamptonshire Healthcare NHS Foundation Trust

- The Trust was awarded the Green Kitchen Award accreditation in Dec 2025 and NHSE Gold Star award for food waste and plastics reductions
- As part of the Healthy Food for Staff, Visitors and Patients CQUIN, the Trust no longer promotes drinks or food that are high in fat, salt or sugar.
- Menus have been redesigned in line with NHS England’s 50/50 (50% plant-based options which offer nutritious, low carbon options). These NHSE menus support Soil Association accreditation and demonstrate NHFT’s reduced food carbon footprint – as a result the Trust was awarded Bronze accreditation.
- The use of red meat and ultra processed meats has been significantly reduced.
- Staff have put forward proposals for sustainable kitchen staff uniforms made from recycled materials.
- Oil Chef devices have been installed on fryers to extend the life of cooking oil.

Leicestershire Partnership and
Northamptonshire Healthcare
Associate University Group



Low carbon care

Our green plans

Low carbon care green plan

Green plan 2025-2028

Our teams working directly with patients, services users and carers hold deep insight into patient journeys and system pressures which places them in a unique position to lead and inform sustainable transformation. Net zero clinical transformation is about continuously improving care by reducing waste, using lower carbon alternatives and moving services closer to home as part of a neighbourhood health service.

Green plan focus

We can make a difference together to improve public health, enhance patient care, improve financial and operational efficiency and future-proof our services.

Reducing single use

Since 2013, the NHS has used over 600 million single use items and recognising this, the Department of Health vision is for the UK to have moved from avoidable single use products towards a functioning circular system by 2045. This requires us to change the mindset from the cheapest single use items in the short-term to better quality and value re-usable things in the long-term.

We will:

- Identify Trust clinical leads with oversight of net zero clinical transformation with formal links into board level governance structures.
- Collaborate with clinical and QI colleagues on a proof-of-concept sustainable quality improvement process and campaign to reduce single use items and transition toward reusables where patient care and safety can benefit.
- Develop sustainability innovation events for staff ideas and innovation.
- Focus on reducing emissions and improving quality of care within our Mental Health Learning Disability & Autism care delivery pathways.

Highlights

- Both Trusts have grown and developed their virtual appointments offer, improving patient access to care and reducing travel related emissions.
- NHFT's Sexual Health service returned to re-usable speculums, moving away from single use, reducing clinical waste and providing low carbon care.
- 0-19 services have switched to re-using previously disposable newborn head measuring tapes, storing the tapes in baby's Red Book between visits.
- The Podiatric surgery service has reintroduced washable surgical gowns.
- Specialist Dental service has transitioned to digital imaging, reducing x ray film waste.

Leicestershire Partnership and
Northamptonshire Healthcare
Associate University Group



Medicines

Our green plans

Medicines green plan

Medicines account for 17% of the NHS Carbon Footprint. The medicine lifecycle drives green house gases from raw material extraction, energy intensive chemical manufacturing processes, global transport, packaging, disposal and waste.

Green plan focus

Reducing our medicines footprint is central to effective delivery of our Trust Green plans.

Green plan 2025-2028

We will:

- Continue promoting correct disposal of inhalers to prevent avoidable release of propellants.
- Investigate options for recycling foil blister packs as a Group scheme.
- Optimise and consolidate wholesaler deliveries to reduce transport emissions.
- Move to electronic controlled drug registers.
- Consider expanding robotic dispensing.



Medicines highlights

Both Trusts

Introduced electronic prescribing – offering a number of sustainability, quality and safety benefits, including reducing our use of paper and improving logistics in relation to medicines prescribing and reducing the requirement for Trust staff to travel between sites.

Leicestershire Partnership NHS Trust:

- Has a robotic dispensing system at Glenfield Hospital -allowing nursing staff to securely access out of hours medication without the need for pharmacist travel.
- Introduced and expanded expired medication and inhaler waste disposal waste streams.
- Consolidated deliveries and optimised internal daily delivery routes to reduce associated transport emissions.
- Has taken steps to reduce unnecessary cannulation and IV drugs use.

Northamptonshire Healthcare NHS Foundation Trust:

- Received Dragons Den funding to pilot Braun Easypump delivery of IV medications that improve efficacy of drug delivery, reduce staff travel and IV consumables.



Leicestershire Partnership and
Northamptonshire Healthcare
Associate University Group



Procurement

Our green plans

Our procurement and supply chains

Procurement drives most of the NHS carbon footprint, accounting for 62% of carbon emissions. This has made reducing procurement CO2 emissions a national priority with its own national target to achieve:

Net zero by 2045 for the emissions the NHS can influence (the NHS Carbon Footprint Plus), with an ambition to reach an 80% reduction by 2036 to 2039.

Green plan focus

We are actively promoting localism; engaging with local suppliers where appropriate to help reduce transport emissions and support local economies.

Green plan 2025-2028

We will:

- Continue to use NHS approved national frameworks with net zero and sustainability embedded in the supplier selection criteria.
- Collaborate with clinical and Quality Improvement colleagues on a campaign to reduce single use items and transition toward reusables where patient care and safety can benefit.
- Require our suppliers to provide their carbon reduction plans as part of the national procurement policy note 06/21.
- Encourage our suppliers to engage with the NHS England Evergreen Sustainable Supplier Assessment.
- Increasingly adopt circular approaches, for example office furniture with membership of Warp-It – a platform for reusing office equipment around each Trust.
- Move away from virgin materials, for example we now exclusively to recycled paper.



Highlights

- Both Trusts have developed a common policy and toolkit for Social Value & Sustainable Procurement.
- External benchmarking by the University of Manchester shows that 19% of NHFT's and 28% of LPT's procurement is in the local economy.

Leicestershire Partnership and
Northamptonshire Healthcare
Associate University Group



Travel and transport

Our green plans

Our journeys and clean air

Travel and transport is responsible for 14% of the NHS Carbon Footprint. This means it is one of the most visible and immediate carbon levers in Green plans. We recognise that reducing carbon emissions and pollution from our fleet, clinician, staff and patient travel is a critical component of our Trust Green plans.

Green plan 2025-2028

We will:

- Prioritise electrification of our fleet in line with national deadlines for 2028 by expanding our Electric Vehicle (EV) charging points infrastructure across both Trusts using available government funding.
- Introduce more electric vans for the Trust fleet of portering vehicles – moving supplies and equipment around the estate.
- Add more electric vehicles to the Trust Enterprise Car Club pool car arrangement.
- Investigate feasibility of offering only zero emissions vehicles through the staff Salary Sacrifice scheme.
- Promote active travel such as cycle to work schemes.



Our journeys and clean air highlights

Both Trusts

- Hybrid and agile working models are established in each Trust which has significantly reduced the need for staff to commute.
- Both Trusts are collaborating at System level with partners to inform regional travel planning.
- LPT and NHFT have implemented Autoplanner software which automates the scheduling of community nursing visits and optimises routes to reduce clinician travel also improving productivity.
- The NHFT Travel plan has been completed in partnership with Go Travel Solutions (a publicly funded charity) on how to reduce travel emissions.

LPT

- Has been awarded government Decarbonisation Funding to expand fleet EV charging point infrastructure.
- Has introduced two electric vans to the Trust's portering fleet.
- Installed vehicle trackers on fleet vans to inform optimised routes and reduce unnecessary travel.

NHFT

- Has installed EV charging infrastructure at its Berrywood site
- Developed a comprehensive Travel Plan to complement Trust and System Green plan delivery.





www.leicspart.nhs.uk
www.nhft.nhs.uk



**Northamptonshire
Healthcare NHS
Foundation Trust**

St Mary's Hospital
Kettering
NN15 7PW
Telephone: 03000 274 000

**Leicestershire
Partnership NHS Trust**

Room 100/110 Pen Lloyd Building
County Hall, Leicester Road
Glenfield
Leicestershire
LE3 8RA
Telephone: 0116 225 6000